



Citation for published version:

Baxter-Jones, A, Barbour-Tuck, E, Donovan, D, Sherar, L, Knight, C, Cumming, S, Ferguson, L, Kowalski, K & Humbert, L 2020, 'The Role of Growth and Maturation during Adolescence on Team-Selection and Short-Term Sports Participation', *Annals of Human Biology*, vol. 47, no. 4, pp. 316-323.
<https://doi.org/10.1080/03014460.2019.1707870>

DOI:

[10.1080/03014460.2019.1707870](https://doi.org/10.1080/03014460.2019.1707870)

Publication date:

2020

Document Version

Peer reviewed version

[Link to publication](#)

This is an Accepted Manuscript of an article published by Taylor & Francis in *Annals of Human Biology* on 21/1/2020, available online:
<https://www.tandfonline.com/doi/abs/10.1080/03014460.2019.1707870?journalCode=iahb20>

University of Bath

Alternative formats

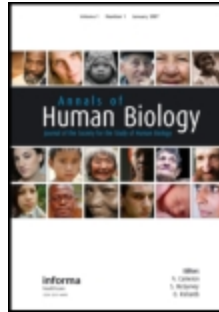
If you require this document in an alternative format, please contact:
openaccess@bath.ac.uk

General rights

Copyright and moral rights for the publications made accessible in the public portal are retained by the authors and/or other copyright owners and it is a condition of accessing publications that users recognise and abide by the legal requirements associated with these rights.

Take down policy

If you believe that this document breaches copyright please contact us providing details, and we will remove access to the work immediately and investigate your claim.



The Role of Growth and Maturation during Adolescence on Team-Selection and Short-Term Sports Participation

Journal:	<i>Annals of Human Biology</i>
Manuscript ID	TAHB-2019-0212.R1
Manuscript Type:	Special Issue Article
Keywords:	relative age effect, children, youth, talent identification, exercise

SCHOLARONE™
Manuscripts

1
2
3 I thank the reviewer for their positive response and have highlighted my responses in the attached
4 revised manuscript
5

6
7 1. Key words have been changed
8

9 2. 36-months was chosen for follow-up as this was the maximum duration of grant funding provided.
10 This has been added to the text.
11

12
13 3. Agree the last paragraph of the discussion was disconnected from the rest of the narrative and
14 this has been reconstructed accordingly
15

16
17
18
19
20
21
22
23
24
25
26
27
28
29
30
31
32
33
34
35
36
37
38
39
40
41
42
43
44
45
46
47
48
49
50
51
52
53
54
55
56
57
58
59
60

For Peer Review Only

1
2
3
4
5 **The Role of Growth and Maturation during Adolescence on Team-Selection and Short-**
6 **Term Sports Participation**
7

8
9
10 **Running title:** Growth, team selection and sports participation
11
12
13
14
15
16
17
18
19
20
21
22
23
24
25
26
27
28
29
30
31
32
33
34
35
36
37
38
39
40
41
42
43
44
45
46
47
48
49
50
51
52
53
54
55
56
57
58
59
60

For Peer Review Only

Abstract

Background: During adolescence, deselection from sport occurs during team try-outs when month of birth, stage of growth and maturation may influence selection.

Aim: The purpose of this study was to identify differences in growth and maturity related factors between those selected and deselected on to youth sports teams and identify short-term associations with continued participation.

Subjects and methods: Eight hundred and seventy participants, aged 11 to 17 years, were recruited from six sports tryouts in Saskatchewan, Canada: baseball, basketball, football, hockey, soccer and volleyball. 244 of the initial 870 (28%) returned for follow-up at 36 months. Chronological (years from birth), biological (years from age at peak height velocity (APHV)) and relative (month of birth as it relates to the selection band) ages were calculated from measures of date of birth, date of test, height, sitting height and weight. Parental heights were measured or recalled and participants adult height predicted. Reference standards were used to calculate z-scores. Sports participation was self-reported at try-outs and at 36-month follow-up.

Results: There was an over representation of players across all sports born in the first and second quartiles of the selection bands ($p < 0.05$), whether they were selected or deselected. Z-scores for predicted adult height ranged from 0.1 (1.1) to 1.8 (1.2) and were significantly different between sports ($p < 0.05$). Height and APHV differences ($p < 0.05$) were found between selected and deselected male participants. In females only weight differed between selected and deselected female hockey players ($p < 0.05$); no further differences were found between selected and deselected female participants. Four percent of deselected athletes exited sports participation and 68% of deselected athletes remained in the same sport at 36 months, compared with 84% of selected athletes who remained the same sport.

1
2
3 **Conclusions:** It was found that youth who attended sports team's try-outs were more likely to be
4
5 born early in the selection year, be tall for their age, and in some sports early maturers. The
6
7 majority of both the selected and deselected participants continued to participate in sport 36
8
9 months after try-outs, with the majorly continuing to participate in their try-out sport.
10
11
12
13
14
15

16 **Key words:** children, youth, relative age effect, talent identification, exercise
17
18
19
20
21
22
23
24
25
26
27
28
29
30
31
32
33
34
35
36
37
38
39
40
41
42
43
44
45
46
47
48
49
50
51
52
53
54
55
56
57
58
59
60

Introduction

According to the 2018 ParticipACTION Report Card on Physical Activity for Children and Youth in Canada, 76% of 11-15 year olds participated in organized sport (ParticipACTION Canada 2018). Although, many young children have the opportunity to participate on inclusive community recreational sports teams, by adolescence team selection becomes less inclusive and relies mostly on selection at team try-outs. Deselection from school sports in Canada begins largely in grade 9 (13-14 years), as high school teams try to remain competitive. Many youth discontinue or quit sport during adolescence, sometimes because of being cut from a sports team (Fraser-Thomas et al. 2008; Gleddie et al. 2019). However, questions have arisen over the lack of due consideration to the potential impact of key growth and maturation processes occurring during adolescence on the selection process (Vaeyens et al. 2008), and the consequences on sports participation for those deselected from sports teams.

There is a long history of selecting children to sports teams according to chronological age (CA) bands, over either 12 or 24 months (Crampton 1908; Cumming et al. 1972; Goldberg & Boiardo 1984; Baxter-Jones 1995; Rogol et al. 2018). For example, an under 15 team will be made up of 13 and 14 year olds, an under 13 team, 11 and 12 year olds, etc. The assumption underlying this grouping method is that adolescents of similar ages will be of similar sizes and abilities and will thus receive age-appropriate instruction and be evenly matched in competition (Malina et al. 2019). In practice, this is rarely the case, as a child born within the first month of a 24-month age band will have up to 23 months more growth and maturation than a child born in the last month of the same age band. This difference of age between individuals in the same age band is referred to as a relative age (RA), and its consequence is known as the relative age effect (RAE) (Musch & Grondin 2001). Concerns have been expressed as to whether CA bands are optimal, or appropriate, for adolescent competition (Baxter-Jones 1995; Rogol et al. 2018),

1
2
3 particularly during the years surrounding puberty when children of the same CA can be up to
4
5 five years in difference in biological maturity (e.g. years from age at peak height velocity
6
7 (APHV)), termed biological age (BA). The idea of using BA rather than CA bands has been
8
9 termed bio-banding (Rogol et al. 2018; Malina et al. 2019).

10
11
12 Advanced BA is accompanied by morphological and physiological advantages in
13
14 outcomes such as height, weight, heart volume, lung function, aerobic power, and muscular
15
16 strength, to name but a few (Baxter-Jones 1995). Disregarding BA in the process of selection can
17
18 results in youth being chosen not so much for their skills but for their size and/or fitness in
19
20 comparison to their teammates; a combination of their genetic potential and their growth and
21
22 maturity status. The bias found in youth sports, particularly males sports, favoring taller, and
23
24 stronger athletes, means that the individual with greater biological ages are more likely to be
25
26 selected on to sports teams (Malina 1994). The greater size and strength of later versus earlier
27
28 maturing adolescents may mask, or be mistaken for, greater sport specific skill (Armstrong
29
30 2017). In other words, youth sports participants with a later relative age (born later in the
31
32 selection period) and/or later maturation (younger BA at a given CA) are more likely to be
33
34 deselected, even if they have the greatest potential for that sport (Malina et al. 2019).

35
36
37 It is unknown if being selected or deselected for a team influences short-term (over 36
38
39 months) or even long-term (cessation of involvement in sport over the entire life period)
40
41 participation in that sport. This is concerning as long-term participation in sport is known to have
42
43 physical, social and psychological benefits (Stryer et al. 1998; Biddle 2003; Warburton et al.
44
45 2006; Moeijes et al. 2019). For example, sports participation and physical activity have been
46
47 shown to increase positive mood, lower anxiety increase positive self-perceptions, and enhance
48
49 self-esteem (Biddle 2003; Fox 2003; Veliz & Shakib 2012). Unique to sporting situations is the
50
51
52
53
54
55
56
57
58
59
60

1
2
3 ability to foster the development of skills in the areas of self-discipline, competitiveness,
4
5 sportsmanship, leadership, self-confidence, and coping with success as well as adversity (Stryer
6
7 et al. 1998). Child and youth athletes also have higher levels of aerobic power and muscular
8
9 power, and lower body fat than their non-athletic counterparts (Baxter-Jones & Helms 1994), all
10
11 characteristics that contribute to long-term cardiovascular health. As such, there is a need for a
12
13 better understanding of the role of team selection on continued participation or exit from sport.
14
15

16
17 Further research on the influences of birth month, growth and maturation on youth sport
18
19 selection is warranted, as is the consequences of such selections on future sports participation.
20
21 Therefore, this study aimed to identify if there were differences in birth month, growth and
22
23 maturity factors between boys and girls selected and deselected on to provincial sports teams. In
24
25 addition, the relationship between selection and deselection on continued participation in that
26
27 sport was investigated. It was hypothesized that those selected would be born early in the
28
29 selection band, be older and more mature and would be more likely to remain in the sport.
30
31
32
33

34 **Methods**

35 *Participants*

36
37
38 Participants were involved in the Saskatchewan Sports Participation Study (2013-2017).
39
40 In 2013, through consultation with Sask. Sport Inc., six sporting bodies were recruited: (i)
41
42 Saskatchewan Hockey Association; (ii) Saskatchewan Soccer Association; (iii) Basketball
43
44 Saskatchewan; (iv) Baseball Saskatchewan; (v) Saskatchewan Volleyball; and (vi) Football
45
46 Saskatchewan. Between February 2014 and February 2015 recruitment took place at: (i) male
47
48 and female hockey Bantam camps (U-15); (ii) male and female high performance development
49
50 stream soccer camps (U-12, U-13, U-14 and U-15); (iii) male and female basketball provincial
51
52
53
54
55
56
57
58
59
60

1
2
3 team try-outs (U-15); (iv) male baseball bantam selection try-outs (U-15); (v) male and female
4 volleyball high performance program camps (U-15, U-16 and U-17); and (vi) male Team
5
6 Saskatchewan Selection camp (U-16). All sporting associations used Dec 31st as their cut-off
7
8 dates for age bands.
9

10
11
12 Recruitment and baseline assessment occurred at the selection camps. The sporting
13
14 bodies provided lists of names of those selected for teams. Follow-up data were collected at 36
15
16 months through online or mailed out questionnaires, or by telephone assisted questionnaires.
17
18 **Thirty-six months was chosen as this was the duration of the funding provided.** Individual's who
19
20 appeared at more than one sport try-out camp were asked to identify their main sport and their
21
22 data collected at other sport try-outs was excluded.
23
24

25
26 Data was collected on participant demographics, anthropometrics and parental heights at
27
28 baseline. At baseline and 36 months the self-report Sports Participation Activities (SPA)
29
30 questionnaire was administered. Child assent and parental consent were obtained for all
31
32 participants included in the study and all procedures were approved by the University of
33
34 Saskatchewan Behavioural Research Ethics Board.
35
36

37
38 Eight hundred and seventy participants were recruited across all the sports try-outs: 393
39
40 hockey players (269 male and 124 female); 138 soccer players (74 male and 64 female); 86
41
42 basketball players (51 male and 35 female); 100 volleyball players (35 male and 65 female); 78
43
44 male football players; and 75 male baseball players. Athletes were between the ages of 11-17
45
46 years at baseline.
47
48

49
50 Follow-up data was obtained from 28% of the sample at 36 months: 244 subjects, 89
51
52 hockey players (50 male and 39 female); 48 soccer players (23 male and 25 female); 27
53
54
55
56
57
58
59
60

1
2
3 basketball players (14 male and 13 female); 36 volleyball players (11 male and 25 female); 26
4
5 male football players; and 18 male baseball players.
6
7

8 9 *Chronological age*

10
11 Chronological age (CA) was calculated by subtracting the date of birth from the date at
12
13 try-out. CA categories were constructed using 1-year intervals from the midpoints of the age; for
14
15 example, the 10-year age group included participants from 9.50 to 10.49 years of age.
16
17

18 19 *Biological age*

20
21 A biological age (BA) was identified by predicting the years from attainment of peak
22
23 height velocity (PHV). PHV is a somatic maturation milestone found in both males and females.
24
25 To predict when PHV would occur a maturity prediction equation from anthropometric measures
26
27 was used (Mirwald et al. 2002); based on age, sex, height, sitting height and weight. The age
28
29 from PHV, or maturity offset, estimates how many years the subject is from his or her age-at-
30
31 PHV. A positive (+) maturity offset represents the number of years the participant is beyond
32
33 PHV. A positive (+) maturity offset represents the number of years the participant is beyond
34
35 PHV, whereas a negative (-) maturity offset represents the number of years the subject is prior to
36
37 PHV. BA categories were constructed using 1-year intervals such that the -1.0 BA category
38
39 included those with a BA of -1.51 to 0.49.
40
41
42

43 44 *Relative Age*

45
46 Chronological age cut-off (month of birth) were identified for each team. Months of birth
47
48 were quartiled for both 12 month and 24-month age bands. For example, if the team used a 12-
49
50 month age band with a cut-off of January 1, then the first quartile one would contain athletes
51
52 born between January 1 and March 31. For a 24 month age band then the first quartile would
53
54 contain athletes born between January 1 and June 30 of the first year.
55
56
57
58
59
60

Anthropometry

Height, sitting height and weight were collected following the protocols of the International Society for the Advancement of Kinanthropometry (Ross & Marfell-Jones 1991). Using a portable stadiometer (Seca Portable Stadiometer, Hamburg, Germany) height and sitting height were measured in participants, without shoes, holding their heads in the Frankfurt plane, with a precision of 0.1 cm. Body weight (kg) was measured with children in light clothing and with a 0.1 kg precision using a portable digital scale (Toledo Scale Company, Thunder Bay, Ontario, Canada). All measures were performed twice and a mean calculated; a third measurement was taken if there was a difference of more than 0.1 cm or 0.4 kg. Using reference data from the World Health Organization's 2014 Canadian data (World Health Organization 2014), each participant's height and weight were normalised by calculating z-scores.

Parental heights were collected by direct measurement at tryouts or self-report at tryout or via correspondence. Self-report parental heights were corrected for the over-estimation commonly seen when reporting heights using the following equations:

$$\text{male } y = 2.316 + 0.955x$$

$$\text{female } y = 2.803 + 0.953x,$$

with y the adjusted value in inches and x the self-reported height measurement in inches (Epstein et al. 1995).

Predicted adult height was estimated using (i) mid-parental heights (Tanner et al. 1970):

$$\text{male} = ((\text{mothers height (cm)} + 13 \text{ cm}) + (\text{fathers height (cm)}))/2$$

$$\text{female} = ((\text{mothers height (cm)}) + (\text{fathers height (cm)} - 13 \text{ cm}))/2$$

and (ii) the Khamis-Roche Method (Khamis & Roche 1994) using the following equation:

$$\text{Predicted adult stature} = \beta_0 + \beta_1 \text{ stature} + \beta_2 \text{ weight} + \beta_3 \text{ mid-parent stature}$$

1
2
3 Where β_0 is the intercept and β_1 , β_2 and β_3 are the chronological age grouped coefficients
4 found in the tables reported by Khamis and Roche (1994).
5
6
7

8 *Analyses*

9
10 The data are expressed as means and standard deviations. Distribution of birth dates by
11 quartiles were investigated by chi-squared goodness of fit tests to assess for bias towards the first
12 quartiles of months of birth, using either 12 or 24 month bands. Independent t-tests and ANOVA
13 were used to determine group differences. Statistical analysis was performed using a commercial
14 software package (SPSS 25, IBM). $P < 0.05$ was considered statistically significant, unless
15 otherwise noted.
16
17
18
19
20
21
22
23
24
25

26 **Results**

27
28 When considering the entire sample, more participants were born within the first two
29 birth months quartiles (i.e. first 6 months of a 12 month band or first 12 months of a 24 month
30 band) ($p < 0.05$); graphically displayed in figure 1 for selected and deselected participants. In
31 both groups there was a significant overrepresentation of the first two birth month quartiles
32 ($p < 0.05$). The distributions of birth month quartiles for each sex, sport and age group are shown
33 in Tables 1 and 2. Significant skewness in birth month distributions were found in both age
34 groups of male hockey players ($p < 0.05$), selected football and volley players ($p < 0.05$) and
35 deselected baseball players ($p < 0.05$). In females the only significant differences in birth month
36 distribution were found in both selected and deselected hockey players ($p < 0.05$).
37
38
39
40
41
42
43
44
45
46
47
48
49

50 (Figure 1 here)

51 (Tables 1 and 2 here)

1
2
3 Tables 1 and 2 show the means and standard deviations for growth parameters for males
4 and females respectively. Selected male hockey players (Table 1) reached APHV earlier than
5 those who were deselected ($p < 0.05$) and were predicted to have a greater adult stature ($p < 0.05$).
6 Selected female hockey players (Table 2) had greater weight and predicted adult stature than
7 deselected players ($p < 0.05$). Selected male basketball players were taller, heavier, older, had
8 taller fathers and had an earlier age at PHV ($p < 0.05$). The only difference found in female
9 basketball players was that selected individual's fathers were shorter than deselected players
10 father's ($p < 0.05$). No differences were found between selected and deselected female soccer
11 players. Selected male U15 were younger and shorter than those deselected ($p < 0.05$), whereas
12 U17 selected male volleyball players were chronologically older, reached PHV earlier and were
13 taller ($p < 0.05$) with greater predicted adult stature ($p < 0.05$) compared to deselected U17.
14 Selected U16 male volleyball players had earlier predicted age at PHV, were taller than reference
15 norms and had greater predicted stature ($p < 0.05$). No significant differences were found between
16 selected and deselected female volleyball players try-out groups ($p > 0.05$). Selected male baseball
17 and football players had earlier ages of PHV ($p < 0.05$) and selected football players were found to
18 be chronological older, taller and heavier ($p < 0.05$), compared with deselected players.
19
20
21
22
23
24
25
26
27
28
29
30
31
32
33
34
35
36
37
38
39

40
41 Thirty-six months after the try-outs it was found that 4% of the deselected participants no
42 longer participated in any sport, compared to 1% in the selected group. Of all the participants
43 attending try-outs, 81% identified the try-out sport as their main sport in which they participated.
44 In contrast at 36 month follow-up, 75% of all participants continued to identify the try-out sport
45 as their main sport. Comparing between selected and deselected participants at follow-up it was
46 found that 84% and 68% respectively identified the try-out sport to still be their main sport.
47 Specifically in selected athletes, participation in their try-out sport had increased at follow-up
48
49
50
51
52
53
54
55
56
57
58
59
60

1
2
3 compared to try-out, in soccer (96% at 36 months compared to 84% at baseline), volleyball
4 (90% at 36 months compared to 75% at baseline), basketball (100% at 36 months compared to
5 83% at baseline) and football (57% at 36 months compared to 51% at baseline). In contrast,
6 selected hockey (86% at 36 months compared to 89% at baseline) and baseball (33% at 36
7 months compared to 89% at baseline) players showed a decrease in the percentage of participants
8 claiming it was their main sport at follow-up compared to try-outs. In those participants who
9 were deselected, the percentage identifying their main sport to be the same at follow-up as at try-
10 outs dropped in soccer (79% at 36 months compared to 88% at baseline), volleyball (71% at 36
11 months compared to 84% at baseline), hockey (79% at 36 months compared to 85%t baselin),
12 basketball (75% at 36 months compared to 76% at baseline) and baseball (13% at 36 months
13 compared to 78% at baseline) but had increased in football (56% at 36 months compared to 31%
14 at baseline).

31 Discussion

32 This study aimed to identify differences in birth month, growth and maturity factors
33 between individuals selected and deselected on to provincial sports teams at team try-outs. It
34 was found that a relative age effect (RAE) was present in all of the participants at the initial try-
35 outs, with an over representation of those born within the first two quartiles of a selection band,
36 regardless of being selected or deselected or the sport being banded by either 12 or 24 months.
37 This RAE phenomenon was also observed in specific sex, sport, and age groupings. It was also
38 found that all participants in the sample (both selected and deselected), apart from soccer players,
39 were taller than reference averages for their age. In addition, there was an observed bias in
40 selected male basketball, volleyball and football players in that they were chronologically older,
41 taller and were more mature than deselected players. Chronological age and maturity status did
42
43
44
45
46
47
48
49
50
51
52
53
54
55
56
57
58
59
60

1
2
3 not affect selection in female athletes. Only selected female hockey players demonstrated a size
4
5 difference from deselected players. These results taken together suggest that both male and
6
7 females with smaller age related stature, late maturation or whose birth month fell towards the
8
9 end of the selection period were less likely to participate in team try-out for provincial sports
10
11 teams; and that selection of more mature, older and larger individuals is sport specific, and more
12
13 prevalent in male sports.
14
15

16
17 The continued participation in sport was also investigated, and it was found that a very
18
19 small percentage of the deselected athletes were no longer participating in sport 36 months after
20
21 the try-outs. Success at try-outs did not appear to be indicative of continued sports participation.
22
23

24
25 Maturation is accompanied by significant gains in size, physiological development and
26
27 thus enhanced performance and the maturity-related gradient of selection/deselection in
28
29 children's sports is well documented (Sherar et al. 2007; Malina et al. 2017). For example,
30
31 advanced maturation has contributed to the selection of male youth soccer players, and exclusion
32
33 of later maturing youth, beginning as early as 12 years of age (Malina et al. 2017). A similar
34
35 maturational advantage for selection has been observed in elite male and female junior tennis
36
37 players, and male youth hockey players (Sherar et al. 2007; Myburgh et al. 2016). The current
38
39 findings affirm this same bias in selected male hockey, basketball, U16 volleyball, baseball and
40
41 football players who were all determined to have earlier ages of PHV, and were thus more
42
43 mature for their CA, than their deselected counterparts. Maturation likely contributed to the
44
45 greater height and/or weight in selected male football players, basketball and volleyball players.
46
47 A size advantage, not attributable to advanced maturation, was found in selected female hockey
48
49 players in the present study who were heavier but did not have a greater BA than deselected
50
51 players. In contrast, selected male U15 soccer players were shorter than deselected players.
52
53
54
55
56
57
58
59
60

1
2
3 While the theory remains anecdotal, we suggest that this may be because in Saskatchewan, larger
4 children and adolescents are recruited in to sports such as football, hockey and basketball
5
6 resulting in more skilled smaller soccer players. This may be because soccer has not achieved the
7
8 same level of popularity in Saskatchewan as other male sports such as hockey. In Europe, where
9
10 men's soccer is more popular, the results of team soccer tryouts show similar trends to those of
11
12 Canadian hockey tryouts (Helsen et al. 2005; Sherar et al. 2007), and current findings for hockey
13
14 and football.
15
16
17
18
19

20 Other than in female hockey, there were no maturational or size differences identified
21
22 between selected and deselected female sport participants. One reason why we may not have
23
24 found a maturity bias in female sports could be because of a lower competitive level of female
25
26 sports (i.e. not as hard to get selected), or because males tend to be more competitive and
27
28 motivated to win in a sports setting (Findlay & Bowker 2009; Deaner et al. 2015). Alternatively,
29
30 the maturation-related physiological changes that occur in females (compared with males), such
31
32 as increased relative fat mass, widening of hips, and breast development (Siervogel et al. 2003;
33
34 Sherar et al. 2011; Barbour-Tuck et al. 2018), may not be conducive to performance and as such,
35
36 later maturing or younger females may be equally selected as earlier maturing or older females.
37
38
39
40

41 A promising alternative to CA banding is bio-banding, an attempt to maturity-match
42
43 athletes; based on, for example, percentage of adult height attained at tryouts (Malina et al.
44
45 2019). This type of maturity based banding is likely more important in male youth than female
46
47 youth sports because of the higher prevalence of maturity-based selection in male sport. Bio-
48
49 banding also has the potential to mitigate the relative age effect (RAE) and the variance in skill
50
51 within CA bands.
52
53
54
55
56
57
58
59
60

1
2
3 Training, competition and selection groupings are often based on specific birth date cut-
4 offs that are used to categorize athletes into one – or two-year CA bands. Although the primary
5 purpose is to avoid age differences during competition, children born shortly after the cut-off
6 data are older than the late-born children in the same age band. It has been noted in many sports
7 teams, both youth and professional, that birthdates are heavily skewed towards the beginning of
8 the selection year. Potentially this is because relatively older players perform at a higher level,
9 and because coaches tend to rate players born earlier in the selection year as having greater
10 performance potential (Barnsley & Thompson 1988; Baxter-Jones & Helms 1994; Fumarco et al.
11 2017; Ibáñez et al. 2018; Figueiredo et al. 2019). Similar to more mature compared to less
12 mature athletes, relatively older compared to relatively younger athletes have already undergone
13 greater morphological and physiological changes, giving them an advantage in characteristics
14 such as size, cardiovascular size and function, respiratory function, and muscular strength and
15 power (Baxter-Jones 1995). The current study found a significant bias towards the first two birth
16 month quartiles in selected male football and volleyball players, and female hockey players; and
17 that selected male football, basketball and U17 volleyball players were significantly older than
18 deselected players. Interestingly, the deselected male baseball players had a bias towards the first
19 two quartiles. This may be because baseball is less popular or competitive and has a much
20 shorter season in Saskatchewan than, for example, hockey, which has previously demonstrated
21 strong bias towards older and more mature individuals (Sherar et al. 2007). Those participants
22 who were selected for baseball may have been unsuccessful in hockey early on and thus became
23 more committed to skill acquisition in baseball. Again, there were no differences observed
24 between selected and deselected females with the exception of hockey players. This may be due
25 to the timing of maturational and age related changes in females. Almost all of our female
26
27
28
29
30
31
32
33
34
35
36
37
38
39
40
41
42
43
44
45
46
47
48
49
50
51
52
53
54
55
56
57
58
59
60

1
2
3 athletes were over the age of 12 (and most over the age of 14), an age when most females will
4 have gone through peak height velocity (PHV) and other advantageous physiological changes,
5 resulting in homogeneity of age- and maturity- related attributes between selected and deselected
6 groups.
7
8
9
10

11
12 In the current study, it was also found that there was bias towards the first two birth
13 month quartiles when sports, sex, and selected/deselected data was aggregated. This suggests
14 that by the time of adolescent tryouts for provincial sport teams, RAE had likely already had a
15 profound effect on youth sport participation. In other words, individuals with an early birth date
16 quartile had already been preferentially selected, or self-selected for previous teams contributing
17 to an overrepresentation in the current adolescent sample. For example, club soccer players in
18 Saskatchewan are separated into “Premier”, “Division II”, and “Division III” teams as early as
19 U11 (9 and 10 years of age). Either by coach-, parental- or self-selection, it is most likely that
20 only those in the Premier and Division II league would attend a provincial tryout.
21
22
23
24
25
26
27
28
29
30
31
32

33 Time is the great equalizer and earlier maturation or advanced age that presents as greater
34 size in adolescents, does not predict greater final adult height (Vizmanos et al. 2001). Only
35 female hockey and male hockey players, and male basketball players in the current cohort are
36 likely to have greater final adult stature as indicated by greater predicted adult stature, and
37 greater paternal height respectively.
38
39
40
41
42
43
44

45 The physical and psychosocial benefits of sport involvement are well recognised (Baxter-
46 Jones & Helms 1994; Biddle 2003; Fox 2003; Veliz & Shakib 2012). However, the large dropout
47 rates from sports programs during adolescences has been identified by sports psychologist as an
48 area of concern (Fraser-Thomas et al. 2008; Gleddie et al. 2019). Although numerous situational
49 factors (e.g. as lack of playing time, program seriousness, motivation, etc.) have been cited
50
51
52
53
54
55
56
57
58
59
60

1
2
3 among youths' reasons for dropout (Gould et al. 1982), level of maturation is also known to
4
5 contribute to dropout decisions, as does the result of being cut from a team (Fraser-Thomas et al.
6
7 2008). The physical affects for athletes who had been cut from a team seem largely dependant on
8
9 whether or not the individual remained an athlete (Blinde & Stratta 1992). It is noted that
10
11 deselected athletes rarely try out the following school year for the same team they were cut from,
12
13 and that being cut deterred athletes from trying out for future teams in any sport (Gleddie et al.
14
15 2019). It has also been observed that physical activity levels decrease in students who have been
16
17 cut (Gleddie et al 2019). These observations were not replicated in the present study. Two-thirds
18
19 of deselected subjects continued to be involved in the same sport, 36 months after team
20
21 deselection, with the majority of the other third changing sport. Only 4% of the deselected
22
23 subjects were no longer involved in any sport at 36 month follow-up. Although exiting from
24
25 sport was not an issue in the present study, the myriad benefits of sport participation suggests
26
27 that those working with youth and youth athletes should concern themselves with caring for and
28
29 supporting the physical, emotional and social well-being of their charges (Gleddie et al. 2019).
30
31 Those who are cut from teams should be encouraged to continue participation in sport in some
32
33 capacity.
34
35
36
37
38
39
40

41 **Limitations and Future Direction**

42
43 This study is unique in its survey of a diverse set of sports, the inclusion of males and
44
45 females, and the 36 month follow-up, adding important information about the contributors and
46
47 consequences of selection and deselection from a sports team. There are however, limitations to
48
49 the study. The majority of the female participants were maturationally homogenous, being past
50
51 the age of menarche and PHV, making maturational comparison difficult. Similarly, individuals
52
53 trying out for provincial teams are likely to already be elite contributing to the homogeneity of
54
55
56
57
58
59
60

1
2
3 the sample in terms of skills, abilities, maturation and sports experience. Future studies wishing
4 to examine the influence of maturation in female sport selection should recruit individuals before
5 the age of pubertal onset, and the time at which tiered selection begins. Finally, while the overall
6 samples size for the study was large, once split into sport, sex, and selection groups, each sample
7 became much smaller, making it harder to find statistical significance between group means. The
8 smaller sport-specific sample sizes also questions the generalizability of the findings and the
9 ability of to make inferential conclusions.
10
11
12
13
14
15
16
17
18
19
20

21 **Conclusion**

22 The findings from this large and sports-diverse cohort study suggest that there is a
23 selection bias towards more mature and larger individuals. This result varied by sport and sex,
24 being more common in males and more specific to football, hockey, basketball and volleyball,
25 than soccer and baseball. Furthermore, this bias appears to begin prior to the age of 11 years when
26 provincial level try-outs start. This suggest that those attending try-outs are already a bias
27 homogeneous sample and this may explain in part why selection had relatively little effect on
28 sports participation 36 months later. Coaches should be aware that try-out participants show a bias
29 in favour of being born within the start of the selection age band, are likely older, taller and more
30 mature than individual who chose not to attend selection try-outs.
31
32
33
34
35
36
37
38
39
40
41
42
43
44
45
46

47 *Acknowledgements*

48
49 We are grateful to all the participants of this study. This study was supported by Sport Canada
50 and the Sport Canada Research Initiative (SCRI) and funded by the Canadian Social Sciences
51 and Humanities Research Council (SSHRC).
52
53
54
55
56
57
58
59
60

1
2
3
4
5
6
7 *Disclosure statement*
8
9

10 The authors report no conflicts of interest.
11
12
13
14
15
16
17
18
19
20
21
22
23
24
25
26
27
28
29
30
31
32
33
34
35
36
37
38
39
40
41
42
43
44
45
46
47
48
49
50
51
52
53
54
55
56
57
58
59
60

References:

- Armstrong N. 2017. Top 10 research questions related to youth aerobic fitness. *Res Q Exerc Sport*. 88:130–148.
- Barbour-Tuck E, Erlandson M, Muhajarine N, Foulds H, Baxter-Jones ADG. 2018. Longitudinal patterns in BMI and percent total body fat from peak height velocity through emerging adulthood into young adulthood. *Am J Hum Biol*. 30:e23056
- Barnsley RH, Thompson AH. 1988. Birthdate and success in minor hockey: The key to the NHL. *Can J Behav Sci Can / des Sci du Comport*. 20:167–176.
- Baxter-Jones A, Helms P. 1994. Born too late to win? *Nature*. 370:186.
- Baxter-Jones ADG. 1995. Growth and development of young athletes. *Sport Med*. 20:59–64.
- Biddle SJH. 2003. Emotion, mood and physical activity. In: *Physical Activity Psychological Well-Being*: Routledge, UK; pp. 75–97.
- Blinde EM, Stratta TM. 1992. The "sport career death" of college athletes: involuntary and unanticipated sport exits. *J Sport Behav*. 15:3-20.
- Crampton CW. 1908. Physiological age—a fundamental principle. *Am Phys Educ Rev*. 13:214–227.
- Cumming GR, Garand T, Borysyk L. 1972. Correlation of performance in track and field events with bone age. *J Pediatr*. 80:970–973.
- Deaner RO, Balish SM, Lombardo MP. 2016. Sex differences in sports interest and motivation: An evolutionary perspective. *Evolut Beh Sci*. 10(2):73-97
- Epstein LH, Valoski AM, Kalarchian MA, McCurley J. 1995. Do children lose and maintain weight easier than adults: a comparison of child and parent weight changes from six months to ten years. *Obes Res*. 3:411–417.
- Figueiredo AJ, Coelho-e-Silva MJ, Cumming SP, Malina RM. 2019. Relative age effect: Characteristics of youth soccer players by birth quarter and subsequent playing status. *J Sports Sci*. 37(6):677-684.
- Findlay LC, Bowker A. 2009. The link between competitive sport participation and self-concept in early adolescence: A Consideration of Gender and Sport Orientation. *J Youth Adolesc*. 38(1):29-40.
- Fox KR. 2003. The effects of exercise on self-perceptions and self-esteem. In: *Physical Activity Psychological Well-Being*: Routledge, UK; pp. 100–119.
- Fraser-Thomas J, Cote J, Deakin J. 2008. Examining adolescent sport dropout and prolonged engagement from a developmental perspective. *J Appl Sport Psychol*. 20:318-333.
- Fumarco L, Gibbs BG, Jarvis JA, Rossi G. 2017. The relative age effect reversal among the National Hockey League elite. *PLoS One*. 12:e0182827.
- Gleddie DL, Sulz LD, Humbert ML, Zajdel AP. 2019. If You Must Cut Athletes from School Sports Teams, Consider Best Practices. *J Phys Educ Recreat Danc*. 90(2):24-30.

- 1
2
3 Goldberg B, Boiardo R. 1984. Profiling children for sports participation. *Clin Sports Med.*
4 3:153–169.
5
6 Gould D, Feltz D, Horn T, Weiss M. 1982. Reasons for attrition in competitive youth
7 swimming. *J Sport Behav.* 5:155-165.
8
9 Helsen WF, Van Winckel J, Williams AM. 2005. The relative age effect in youth soccer across
10 Europe. *J Sports Sci.* 23:629–636.
11
12 Ibáñez SJ, Mazo A, Nascimento J, García-Rubio J. 2018. The Relative Age Effect in under-18
13 basketball: Effects on performance according to playing position. *PLoS One.* 13:e0200408.
14
15 Khamis HJ, Roche AF. 1994. Predicting adult stature without using skeletal age: the Khamis-
16 Roche method. *Pediatrics.* 94:504–507.
17
18 Malina RM. 1994. Physical growth and biological maturation of young athletes. *Exerc Sport Sci*
19 *Rev.* 22:280–284.
20
21 Malina RM, Cumming SP, Rogol AD, Coelho-e-Silva MJ, Figueiredo AJ, Konarski JM, Koziel
22 SM. 2019. Bio-Banding in Youth Sports: Background, Concept, and Application. *Sport Med.*
23 49(11):1671-1685.
24
25 Malina RM, Figueiredo AJ, Coelho-e-Silva MJ. 2017. Body Size of Male Youth Soccer Players:
26 1978–2015. *Sport Med.* 47:1983–1992.
27
28 Moeijes J, van Busschbach JT, Wieringa TH, Kone J, Bosscher RJ, Twisk JWR. 2019. Sports
29 participation and health-related quality of life in children: results of a cross-sectional study.
30 *Health Qual Life Outcomes.* 17:64. doi:10.1186/s12955-019-1124-y
31
32 Musch J, Grondin S. 2001. Unequal competition as an impediment to personal development: A
33 review of the relative age effect in sport. *Develop Rev.* 21:147-167.
34
35 Myburgh GK, Cumming SP, Coelho E Silva M, Cooke K, Malina RM. 2016. Growth and
36 maturity status of elite British junior tennis players. *J Sports Sci.* 34:1957–1964.
37
38 ParticipACTION Canada. 2018. ParticipACTION. The Brain + Body Equation: Canadian kids
39 need active bodies to build their best brains. The 2018 ParticipACTION Report Card on Physical
40 Activity for Children and Youth. [Internet]. Toronto. Available from:
41 <https://www.participaction.com/en-ca/resources/report-card>
42
43 Rogol AD, Cumming SP, Malina RM. 2018. Biobanding: A New Paradigm for Youth Sports and
44 Training. *Pediatrics.* 142(5):e20180423
45
46 Ross WD, Marfell-Jones M. 1991. Kinanthropometry. In: *Physiological Testing of High-*
47 *Performance Athlete.* Human Kinetics, Champaign IL. pp. 223–307.
48
49 Sherar LB, Baxter-Jones ADG, Faulkner RA, Russell KW. 2007. Do physical maturity and birth
50 date predict talent in male youth ice hockey players? *J Sports Sci* 25:879–886.
51
52 Sherar LB, Eisenmann JC, Chilibeck PD, Muhajarine N, Martin S, Bailey D, Baxter-Jones
53 ADG. 2011. Relationship between trajectories of trunk fat mass development in adolescence and
54 cardiometabolic risk in young adulthood. *Obesity.* 19:1699–1706.
55
56
57
58
59

- 1
2
3 Siervogel RM, Demerath EW, Schubert C, Remsberg KE, Chumlea WC, Sun S, Czerwinski SA,
4 Towne B. 2003. Puberty and Body Composition. *Horm Res Paediatr* 60:36–45.
5
6 Stryer BK, Tofler IR, Lapchick R. 1998. A developmental overview of child and youth sports in
7 society. *Child Adolesc Psychiatr Clin N Am*. 7:697–724.
8
9 Tanner JM, Goldstein H, Whitehouse RH. 1970. Standards for children's height at ages 2-9 years
10 allowing for heights of parents. *Arch Dis Child*. 45:755–762.
11
12 Vaeyens R, Lenoir M, Williams AM, Philippaerts RM. 2008. Talent identification and
13 development programmes in sport: Current models and future directions. *Sport Med*. 38(9):703-
14 714.
15
16 Veliz P, Shakib S. 2012. Interscholastic Sports Participation and School Based Delinquency:
17 Does Participation in Sport Foster a Positive High School Environment? *Sociol Spectr*. 32:558–
18 580.
19
20 Vizmanos B, Martí-Henneberg C, Clivillé R, Moreno A, Fernández-Ballart J. 2001. Age of
21 pubertal onset affects the intensity and duration of pubertal growth peak but not final height. *Am*
22 *J Hum Biol* 13:409–416.
23
24 Warburton DE, Nicol CW, Bredin SS. 2006. Health benefits of physical activity: the evidence.
25 *CMAJ*. 174:801–809.
26
27 World Health Organization. 2014. WHO growth charts for Canada [Internet]. Available from:
28 <https://cpeg-gcep.net/content/who-growth-charts-canada>
29
30
31
32
33
34
35
36
37
38
39
40
41
42
43
44
45
46
47
48
49
50
51
52
53
54
55
56
57
58
59
60

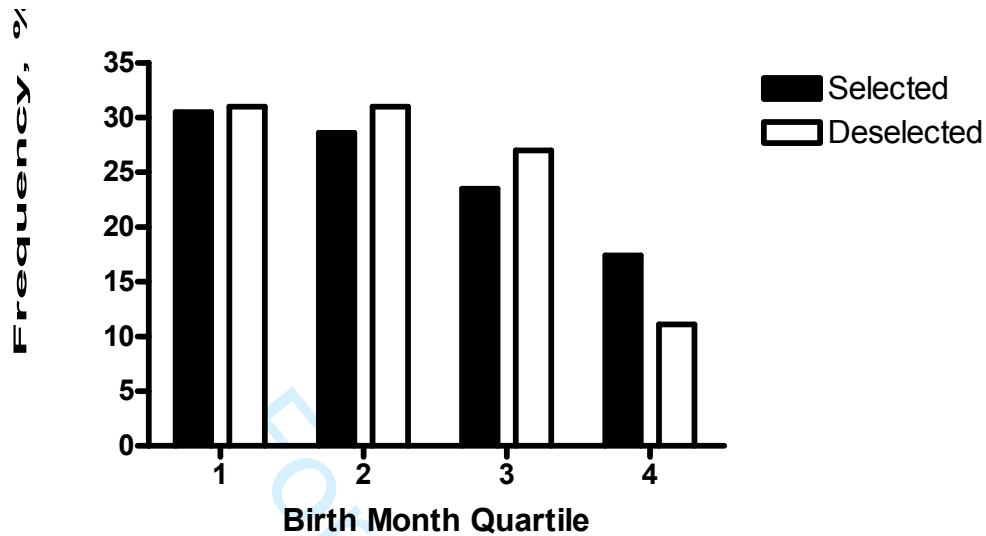


Figure 1: Distribution of birth month quartiles by team selection

Twelve month age-band: Birth month quartile 1=January 1st to March 31st; 2=April 1st to June 31st; 3= July 1st to September 30th; 4= October 1st to December 31st

Twenty-four month age-band: Birth month quartile 1= year one January 1st to June 31st; 2= year one July 1st to December 31st; 3= year two January 1st to June 31st; 4= year two July 1st to December 31st

Table 1: Male Descriptives		Hockey		Basketball		Football		Baseball		Soccer		U12		U13		U14		U15		U16		U17		Volleyball		Deslected		Selected		Deslected		Selected	
n	111	158	37	42	36	63	6	22	21	5	7	7	2	4	4	18	4	5	4	5	4	4	4	4	4	4	4	4	4	4	4	0	
Age (yrs)	14.6±0.3	14.7±0.3	14.2±0.7	14.8±0.4**	14.5±0.6	14.9±0.6	14.2±0.2**	14.7±0.3	13.7±0.3	13.4±0.9	12.7±0.3	12.8±0.2	14.9±0.5	11.7±0.4	16.8±0.3**	16.7±0.5	15.5±0.3	15.5±0.3	15.9±0.2	14.9±0.1	15.5±0.3	15.5±0.3	15.9±0.2	14.9±0.1	15.5±0.3	15.5±0.3	15.5±0.3	15.5±0.3	15.5±0.3	15.5±0.3	14.9±0.1	14.9±0.1	
APHV (yrs)	13.4±0.5**	13.6±0.6	13.1±0.8**	13.1±0.5**	13.5±0.6	13.2±0.6**	13.6±0.5	14.1±0.6	13.7±0.6	14.1±0.4	14.0±0.5	13.3±0.5**	13.9±0.4	13.2±0.6	13.8±0.5	13.6±0.5**	13.8±0.1	13.4±0.2**	13.8±0.1	13.2±0.3	13.4±0.2**	13.4±0.2**	13.8±0.1	13.8±0.1	13.8±0.1	13.8±0.1	13.8±0.1	13.8±0.1	13.8±0.1	13.8±0.1	13.2±0.3	13.2±0.3	
Height (cm)	173.4±5.9	171.9±7.2	180.5±10.8**	170.9±9.9	170.7±8.4	176.7±6.8	173.8±6.7	163.1±4.5**	172.4±6.1	160.7±7.3	159.5±6.69	163.7±8.6	155.5±8.3	176.7±6.8	145.0±7.0	186.2±6.1**	179.5±73.9	186.2±5.9	186.2±5.9	181.7±1.49	186.2±5.9	186.2±5.9	186.2±5.9	186.2±5.9	186.2±5.9	186.2±5.9	186.2±5.9	186.2±5.9	186.2±5.9	186.2±5.9	181.7±1.49	181.7±1.49	
Height (z-score)	0.8±0.9	0.6±0.9	1.7±1.2**	0.8±1.0	0.8±1.0	1.1±1.0	0.7±0.9	-0.1±0.9	0.6±0.9	-0.2±0.9	0.1±1.0	1.2±1.3	0.1±1.0	1.1±1.0	-0.6±0.9	1.5±0.8	0.6±0.7	1.9±0.8**	1.9±0.8**	1.6±0.1	1.9±0.8**	1.9±0.8**	1.9±0.8**	1.9±0.8**	1.9±0.8**	1.9±0.8**	1.9±0.8**	1.9±0.8**	1.9±0.8**	1.6±0.1	1.6±0.1	1.6±0.1	
Weight (kg)	66.7±8.5	66.1±12.6	70.8±12.4**	61.8±11.3	67.4±9.4	69.3±8.5	65.7±9.8	54.8±8.2	61.9±11.8	47.5±6.7	52.1±15.5	50.3±8.4	44.6±9.0	69.3±8.5	45.4±9.8	73.5±7.6	72.0±10.6	72.3±6.4	73.2±9.4	67.3±3.1	72.3±6.4	72.3±6.4	73.2±9.4	73.2±9.4	73.2±9.4	73.2±9.4	73.2±9.4	73.2±9.4	73.2±9.4	67.3±3.1	67.3±3.1		
Weight (z-score)	1.1±0.9	1.0±1.3	1.6±1.2**	0.9±1.0	1.2±0.9	1.3±0.9	0.9±0.9	0.3±0.9	0.6±0.9	-0.3±0.6	0.5±1.4	0.8±1.0	0.1±0.9	1.3±0.9	0.9±2.3	0.9±0.8	0.8±1.1	1.2±0.6	1.1±0.9	1.0±0.3	1.2±0.6	1.2±0.6	1.1±0.9	1.1±0.9	1.1±0.9	1.1±0.9	1.1±0.9	1.1±0.9	1.0±0.3	1.0±0.3			
Fathers Height (cm)	177.4±5.8	178.1±6.5	178.1±9.6*	178.5±7.3	176.3±6.1	177.0±9.7	177.1±4.5	173.3±8.8	175.3±7.1	175.8±7.4	176.3±2.3	173.9±6.5	172.8±4.2	177.0±9.7	175.1±2.3	181.5±6.1	175.1±2.3	182.9±10.1	176.9±5.0	183.6±6.4	182.9±10.1	182.9±10.1	176.9±5.0	176.9±5.0	176.9±5.0	176.9±5.0	176.9±5.0	183.6±6.4	183.6±6.4	183.6±6.4			
Mothers Height (cm)	165.9±5.9	165.4±5.8	165.7±7.9	164.9±5.5	165.6±6.4	168.9±6.5	165.8±6.0	164.6±3.1	163.8±6.7	162.6±6.8	163.2±6.4	164.8±6.1	163.2±7.3	168.9±6.5	165.1±2.3	166.8±7.1	166.1±3.7	173.1±5.0	169.3±6.6	169.3±6.6	173.1±5.0	173.1±5.0	169.3±6.6	169.3±6.6	169.3±6.6	169.3±6.6	169.3±6.6	169.3±6.6	169.3±6.6	169.3±6.6			
Mid-Parent Height (cm)	178.2±4.2	178.1±4.5	178.4±6.8	178.3±4.3	177.2±4.1	179.4±6.6	177.9±4.5	175.5±4.9	176.1±4.1	175.7±5.7	176.3±3.3	175.9±5.4	174.6±5.4	179.4±6.6	176.6±0.9	180.6±5.2	176.6±1.2	184.5±7.9	179.6±5.6	182.9±7.8	184.5±7.9	184.5±7.9	179.6±5.6	179.6±5.6	179.6±5.6	179.6±5.6	179.6±5.6	182.9±7.8	182.9±7.8	182.9±7.8			
Predicted Adult Height (cm)	188.7±5.8*	187.4±6.8	192.8±8.3	189.9±5.7	187.8±6.5	189.8±6.6	188.0±5.4	182.5±5.4	186.1±5.3	185.0±4.9	185.3±3.3	192.2±7.0	185.3±5.6	189.8±6.6	184.7±5.4	189.5±5.9**	183.7±4.9	195.5±7.2**	184.1±4.4	195.0±4.6	195.5±7.2**	195.5±7.2**	184.1±4.4	184.1±4.4	184.1±4.4	184.1±4.4	195.0±4.6	195.0±4.6	195.0±4.6	195.0±4.6			
Birth month quartiles (%)	29.33/23.15**	32.31/21.16**	57.14/22.78**	24.22/35.19	48.36/14.42**	36.25/19.20	33.38/18.11**	50.01/73.3	27.18/32.23	19.43/29.9	40.40/20.0	29.57/14.0	0.57/29.14	0.00/50.0	30.00/25.25	11.44/39.6**	30.25/0.25	40.40/20.0	0.50/25.25	39.15/31.15	40.40/20.0	40.40/20.0	0.50/25.25	0.50/25.25	0.50/25.25	0.50/25.25	0.50/25.25	39.15/31.15	39.15/31.15	39.15/31.15			
** P<0.05 between tryout groups																																	

Table 2: Female Descriptives		Hockey		Basketball		Soccer		Volleyball		U12		U13		U14		U15		U16		U17		U15		
	Selected	Deselected	Selected	Deselected	Selected	Deselected	Selected	Deselected	Selected	Deselected	Selected	Deselected	Selected	Deselected	Selected	Deselected	Selected	Deselected	Selected	Deselected	Selected	Deselected	Selected	Deselected
n	74	50	11	24	5	2	20	4	15	6	2	10	13	14	6	16	8	6	6	8	16	8	6	6
Age (yrs)	14.3±0.6	14.2±0.7	14.4±0.5	14.4±0.7	14.4±0.5	12.7±0.3	13.0±0.3	13.5±0.4	12.7±0.2	12.7±0.4	12.1±0.5	11.8±0.2	16.8±0.3**	16.5±0.3	15.8±0.3	15.9±0.3	14.5±0.4	14.5±0.6	14.5±0.4	15.9±0.3	12.4±0.3	12.0±0.5	11.7±0.4	11.7±0.4
APHV (yrs)	12.1±0.4	12.2±0.5	12.2±0.5	12.1±0.5	12.0±0.7	11.4±0.6	12.0±0.3	12.1±0.2	12.0±0.3	11.9±0.3	11.9±0.5	11.8±0.5	12.7±0.5	12.7±0.3	12.2±0.3	12.4±0.3	12.0±0.5	12.0±0.5	12.0±0.5	12.4±0.3	12.4±0.3	12.0±0.5	11.7±0.4	11.7±0.4
Height (cm)	165.3±6.7	163.5±6.3	166.8±9.5	166.2±6.5	158.9±7.4	165.1±7.2	163.0±10.5**	160.4±3.5	157.7±4.7	158.9±5.2	155.6±6.8	154.1±7.8	175.9±0.8	172.0±5.3	175.1±6.1	171.9±4.1	170.5±6.5	174.9±3.4	174.9±3.4	175.1±6.1	172.0±5.3	170.5±6.5	174.9±3.4	174.9±3.4
Height (z-score)	0.7±0.9	0.5±0.9	0.9±1.3	0.9±0.9	-0.2±1.1	1.2±0.9	0.6±0.6	0.3±0.3	0.2±0.7	0.6±1.0	0.6±1.0	0.4±1.1	1.9±1.2	1.4±0.8	1.8±0.9	1.4±0.6	1.3±0.9	2.0±0.5	2.0±0.5	1.8±0.9	1.4±0.8	1.4±0.6	1.3±0.9	2.0±0.5
Weight (kg)	61.5±8.9**	56.2±8.6	60.8±11.4	59.8±8.3	54.7±11.7	56.2±12.6	55.6±6.4	53.6±8.5	47.1±5.2	49.2±3.8	45.2±8.5	45.7±9.9	67.1±10.2	62.3±9.1	65.6±8.4	62.7±7.9	65.3±7.9	64.6±11.8	64.6±11.8	65.6±8.4	62.3±9.1	62.7±7.9	65.3±7.9	64.6±11.8
Weight (z-score)	1.1±0.9**	0.5±0.9	0.9±1.1	0.9±0.9	0.3±1.4	1.0±1.0	0.6±0.8	0.5±1.1	0.0±0.5	0.4±0.5	0.4±0.9	0.4±1.1	1.4±1.2	0.8±1.0	1.2±1.0	0.9±0.8	1.4±0.8	1.3±1.3	1.3±1.3	1.2±1.0	0.8±1.0	0.9±0.8	1.4±0.8	1.3±1.3
Fathers Height (cm)	178.6±7.1	177.5±5.5	176.6±4.6**	181.1±5.6	176.7±7.4	179.3±5.1	176.6±5.6	178.7±2.3	177.3±4.0	178.1±5.9	173.2±9.7	177.3±6.0	182.9±7.1	181.4±6.2	186.2±8.5	181.2±6.2	180.4±8.9	183.6±6.2	183.6±6.2	186.2±8.5	181.4±6.2	181.2±6.2	180.4±8.9	183.6±6.2
Mothers Height (cm)	167.2±6.2	165.0±4.4	170.3±4.1	165.7±7.2	163.5±4.1	165.4±5.8	164.3±4.6	166.8±8.1	168.1±5.7	163.2±5.2	174.1±6.5	166.0±5.8	165.9±5.9	166.5±5.9	167.3±4.9	167.7±4.5	166.6±7.2	171.5±5.9	171.5±5.9	167.3±4.9	166.5±5.9	167.7±4.5	166.6±7.2	171.5±5.9
Mid-Parent Height (cm)	166.6±5.1	164.5±4.4	166.9±3.2	166.7±4.7	163.6±4.1	178.1±4.5	164.2±4.6	166.3±4.1	164.2±4.9	164.1±3.7	167.1±6.6	165.2±3.9	170.2±4.7	167.5±4.7	170.2±5.7	168.0±3.6	166.9±3.8	171.0±5.4	171.0±5.4	170.2±5.7	168.0±3.6	167.5±4.7	166.9±3.8	171.0±5.4
Predicted Adult Height (cm)	176.3±5.7**	173.2±4.8	177.4±8.3	174.7±6.4	167.2±7.9	180.6±6.8	173.8±4.1	173.0±3.1	175.4±4.2	175.5±3.3	177.4±6.6	177.5±5.3	178.3±9.1	174.6±5.7	179.4±6.5	176.5±4.3	177.7±6.3	182.4±3.7	182.4±3.7	179.4±6.5	174.6±5.7	177.7±6.3	177.7±6.3	182.4±3.7
Birth month quartiles (%)	32243712**	28182828**	2746918	42291712	800020	001000	30253510	5002525	1340407	6617170	1000000	2030500	39153115	21432114	17501716	25122338	01246325	0501733	0501733	17501716	21432114	25122338	01246325	0501733
** p<0.05 between trout groups																								