

Citation for published version:

Williamson, B, Blondel, P, Waggitt, J, Fraser, S, Bell, P & Scott, B 2016, Acoustic imaging around Marine Renewable Energy Devices - Field deployments of the FLOWBEC platform. in J Zang, A Plummer, C Perez-Collazo & P Blondel (eds), *Proceedings of the 3rd PRIMaRE Conference*. University of Bath, pp. 32, 3rd PRIMaRE conference, Bath, UK United Kingdom, 5/07/16.

Publication date:
2016

Document Version
Peer reviewed version

[Link to publication](#)

Publisher Rights
Unspecified

University of Bath

Alternative formats

If you require this document in an alternative format, please contact:
openaccess@bath.ac.uk

General rights

Copyright and moral rights for the publications made accessible in the public portal are retained by the authors and/or other copyright owners and it is a condition of accessing publications that users recognise and abide by the legal requirements associated with these rights.

Take down policy

If you believe that this document breaches copyright please contact us providing details, and we will remove access to the work immediately and investigate your claim.

ACOUSTIC IMAGING AROUND MARINE RENEWABLE ENERGY DEVICES – FIELD DEPLOYMENTS OF THE FLOWBEC PLATFORM

B.J. Williamson^{1,2}, Ph. Blondel², J.J. Waggitt^{1,3}, S. Fraser⁴, P.S. Bell⁵, B.E. Scott¹

¹University of Aberdeen, Institute of Biological and Environmental Sciences, Aberdeen AB24 2TZ, B.Williamson@abdn.ac.uk, B.E.Scott@abdn.ac.uk

²University of Bath, Department of Physics, Bath BA2 7AY, P.Blondel@bath.ac.uk

³Bangor University, School of Ocean Sciences, Menai Bridge LL59 5AB, J.Waggitt@bangor.ac.uk

⁴University of Aberdeen, School of Engineering, Aberdeen AB24 3UE, S.Fraser@abdn.ac.uk

⁵National Oceanography Centre, Liverpool L3 5DA, psb@noc.ac.uk

ABSTRACT

Rapid development of Marine Renewable Energy Devices (MREDs) strongly focuses on tidal and wave sites, although little is known of impacts on surrounding ecosystems. Quantification of the behavior and distribution of animals around MREDs is crucial to understanding these impacts.. The NERC/Defra collaboration FLOW, Water column and Benthic ECology (FLOWBEC) produced an innovative subsea platform [1], which includes an Imagenex multibeam echosounder oriented along the axis of tidal flow, and an EK60 multifrequency echosounder, identifying targets and characterising the morphology of turbulence. Co-registration and tracking [2] will be illustrated with examples from five 2-week deployments at the European Marine Energy Centre (EMEC) in Orkney.

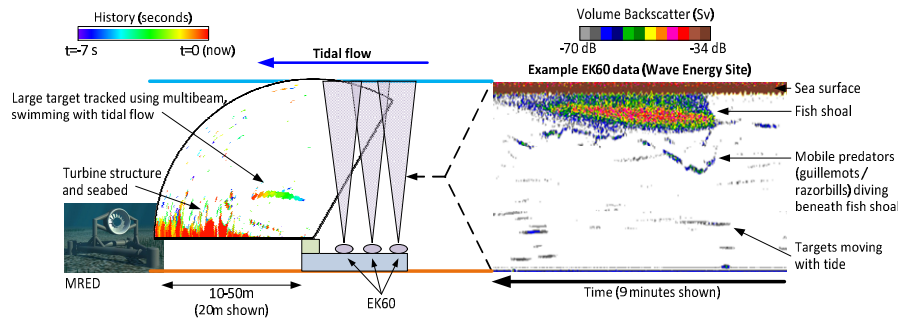


Figure 1: The FLOWBEC subsea platform captures acoustic snapshots of MREDs, marine life and the surrounding water column in a 120° sector, several times per second, at ranges up to 50 m. From [1].

REFERENCES

[1] Williamson, B.J., Ph. Blondel, E. Armstrong, P.S. Bell, C. Hall, J.J. Waggitt, B.E. Scott; “A self-contained subsea platform for acoustic monitoring of the environment around Marine Renewable Energy Devices – Field deployments at wave and tidal energy sites in Orkney, Scotland”, *IEEE J. Oceanic Engineering*, vol. 41, no. 1, pp. 67-81, 2015

[2] Williamson, B., S. Fraser, Ph. Blondel, P. Bell, J. Waggitt and B.E. Scott, “Integrating a multibeam and a multifrequency echosounder on the FLOWBEC seabed platform to track fish and seabird behaviour around tidal turbine structures”, *Proc. 4th Marine Energy Technology Symposium (METS)*, 5pp., 2016