



Citation for published version:

Budd, C, Walsh, E & Russell, R 2015, 'The geometry of r-adaptive meshes generated using optimal transport methods', *Journal of Computational Physics*, vol. 282, pp. 113-137. <https://doi.org/10.1016/j.jcp.2014.11.007>

DOI:

[10.1016/j.jcp.2014.11.007](https://doi.org/10.1016/j.jcp.2014.11.007)

Publication date:

2015

Document Version

Peer reviewed version

[Link to publication](#)

Publisher Rights

CC BY-NC-ND

University of Bath

Alternative formats

If you require this document in an alternative format, please contact:
openaccess@bath.ac.uk

General rights

Copyright and moral rights for the publications made accessible in the public portal are retained by the authors and/or other copyright owners and it is a condition of accessing publications that users recognise and abide by the legal requirements associated with these rights.

Take down policy

If you believe that this document breaches copyright please contact us providing details, and we will remove access to the work immediately and investigate your claim.

THE GEOMETRY OF R-ADAPTIVE MESHES GENERATED USING OPTIMAL TRANSPORT METHODS

C.J. BUDD*, R. D. RUSSELL†, AND E. WALSH‡

Abstract. The principles of mesh equidistribution and alignment play a fundamental role in the design of adaptive methods, and a metric tensor and mesh metric are useful theoretical tools for understanding a method’s level of mesh alignment, or anisotropy. We consider a mesh redistribution method based on the Monge-Ampère equation which combines equidistribution of a given scalar density function with optimal transport. It does not involve explicit use of a metric tensor, although such a tensor must exist for the method, and an interesting question to ask is whether or not the alignment produced by the metric gives an anisotropic mesh. For model problems with a linear feature and with a radially symmetric feature, we derive the exact form of the metric, which involves expressions for its eigenvalues and eigenvectors. The eigenvectors are shown to be orthogonal and tangential to the feature, and the ratio of the eigenvalues (corresponding to the level of anisotropy) is shown to depend, both locally and globally, on the value of the density function and the amount of curvature. We thereby demonstrate how the optimal transport method produces an anisotropic mesh along a given feature while equidistributing a suitably chosen scalar density function. Numerical results are given to verify these results and to demonstrate how the analysis is useful for problems involving more complex features, including for a non-trivial time dependant nonlinear PDE which evolves narrow and curved reaction fronts.

Key words. Alignment, Anisotropy, Mesh Adaptation, metric tensor, Monge-Ampère.

AMS subject classifications. 35J96, 65M50, 65N50

1. Introduction. Efficiently and accurately computing solutions to PDEs (partial differential equations) which exhibit large variations in small regions of a physical domain frequently demands using some form of mesh adaptation/redistribution. It is often desirable to adjust the size, shape and orientation of the mesh elements to the geometry and flow field of the solution of the underlying physical problem. More specifically, if the solution displays anisotropic behaviour, then an anisotropic mesh can potentially capture solution features with a minimal number of mesh points concentrated along such features. This is in contrast to many adaptive methods, such as Winslow’s method [56], which explicitly adjust only the size of mesh elements, typically using equidistribution of some measure of the solution as a guide, and as a result often enforcing unnecessary shape regularity.

As a consequence, there has been considerable interest in designing adaptive mesh algorithms tailored for anisotropic problems. The idea of using a metric tensor to quantify anisotropy was exploited in two-dimensional mesh generation as early as the 1990’s [21], [22], and accurate a posteriori [45], [31], and a priori [20], [29], anisotropic error estimates have since been developed. For example, the Hessian matrix of a function provides a metric [25] which arises in bounding error estimates for its interpolation error and can be used to generate a mesh minimising this error [3], [12], [26], [30]. Anisotropic mesh adaptation methods have since been applied with great success to various problems [40], [21], [19], [43], and much software, such as BAMG [27], and Mesh Adap [41], has been developed based on the metric tensor concept. The majority of the codes implement adaptive mesh *refinement* (AMR) or h-adaptivity methods in which meshes are locally refined by the addition of extra points. Advantages of this

*University of Bath, UK, BA2 7AY (mascjb@bath.ac.uk).,

†Simon Fraser University, Burnaby, BC, Canada, V5N 1S6 (rdr@cs.sfu.ca).

‡Simon Fraser University, Burnaby, BC, Canada, V5N 1S6 (ewalsh@sfu.ca).

approach are that the resulting methods are flexible and robust and can deal with many complex solution and boundary geometries; disadvantages are that h-adaptive methods have complex data structures and refinement is predominately local, which complicates understanding of global mesh regularity. Another disadvantage is that when components of the flow move (e.g. eddies, fronts, gravity currents), mesh points must be removed from regions they have left and new mesh points included in the regions they enter. As small-scale features propagate out of regions in which they are resolved into regions in which they are partially resolved, this can potentially lead to abrupt changes in grid resolution and result in spurious wave reflection, refraction, or scattering [54], [55].

In contrast, adaptive mesh *redistribution* methods, or r-adaptive methods, relocate a fixed number of mesh points in an attempt to generate an optimal mesh on which to represent the solution to the problem, usually guided by the explicit or implicit construction of a mesh mapping and a scalar or tensor valued monitor function represented in terms of the Jacobian matrix of this mapping [32]. These methods potentially offer certain advantages, such as fixed data structures, smoothly graded meshes, and an ability to analyse through this mesh mapping a close coupling between the mesh and the problem solution [8]. Although still much less developed than AMR methods, both theoretically and practically, they have been applied in many areas of science and engineering with great success to solve problems involving boundary layers, inversion layers, shock waves, ignition fronts, storm fronts, gas combustion and groundwater hydrodynamics [6], [38], [33], [34], [49], [51], [52].

Anisotropic mesh generation for r-adaptivity is rigorously studied in [32], where a metric tensor (a symmetric positive definite matrix valued monitor function \mathbf{M}) based on interpolation error is derived. By showing the equivalence between a mesh constructed from this metric tensor and certain equidistribution and alignment conditions, one arrives at a good understanding of the geometry of the resulting meshes. This metric tensor is closely tied to the Jacobian of the associated mesh mapping. It is shown in [29], and [30], that the use of anisotropic meshes can significantly reduce the errors of interpolating functions which themselves have strongly anisotropic features. Indeed, it is shown further in these references that for a fixed number of mesh points, the error in interpolating a function u by piecewise constant or piecewise linear functions can be minimised by using an anisotropic mesh with a careful choice of metric tensor \mathbf{M} . As we discuss later, an important special case is the use of the Hessian matrix to define \mathbf{M} , and we will consider an example of using this in Section 3.

The majority of r-adaptive methods considered in [32] use a variational approach, and various classes of such methods are examined there, including ones involving a combination of terms designed associated with equidistribution and alignment. However, in this paper we consider r-adaptive meshes generated from optimal transport methods solving Monge-Ampère type problems. These methods, described in [17], [14], [50], [9], [10], [8], [6], [5], combine local mesh scaling (equidistributing a specified scalar monitor function to determine how big mesh elements are) with a global regularity constraint (which requires that the mesh mapping be as close as possible in a suitable norm to the identity mapping). This requires solving an associated scalar Monge-Ampère equation and constructing the mesh mapping from the gradient of its solution. These methods have the potential advantages of being robust, flexible, and cheap to implement, for both two and three dimensional problems, particularly CFD type problems [15], [16]. They also have certain very desirable properties, such as an

absence of mesh tangling and an inheritance of self-similar behaviour in the solution [17],[10]. The above papers describe in detail the implementation, convergence and scalability of these methods to many examples. Interestingly, in an attempt to understand local and global properties of the mesh geometry analytical results have been obtained in [17] that show optimal transport methods minimise a measure of grid distortion; however, to date analysis has been lacking for describing precise anisotropic structure of these meshes for sharp interfaces. The main purpose of this paper is to provide such an analysis.

The mesh geometry can be described directly from the metric tensor, or equivalently from the mesh qualities of local scaling (mesh size), anisotropy (mesh alignment) and regularity (mesh skewness) [37], [32]. These are not entirely straightforward to understand since a metric tensor is not used explicitly, although it can be approximated as part of the mesh calculation. However, in certain cases we can deduce the local and global properties of the mesh from a careful study of the analytic solutions of the associated Monge-Ampère equation. What we find is that although the motivation for solving the Monge-Ampère equation is the equidistribution of a scalar quantity, the meshes generated in practice show good alignment with sharp solution features. More specifically, for model anisotropic problems having solutions with linear features and with high curvature features (including singularities), we are able to show rigorously that even though the regularity condition imposed by optimal transport is global, it also leads to anisotropic meshes closely aligned to the features. The analysis is simplified by the fact that optimal transport methods give mesh mappings with symmetric Jacobians, and consequently the alignment can be simply related to their Jacobians. We see that the theoretical results for the model problems are effective in predicting the mesh behaviour (including the specific level of anisotropy) for more complicated solutions to time dependant nonlinear PDEs.

Our motivation for studying anisotropic properties of meshes obtained with the optimal transport approach is multi-faceted. Aside from purely theoretical reasons for understanding the level of anisotropy, there are a number of practical ones. A mesh produced by solving the Monge-Ampère equation is typically used in conjunction with a numerical method to solve some underlying physical PDE on that mesh, and users of the method typically have their own criteria and wish to know what level of anisotropy can be expected from the Monge-Ampère meshes. Also, as is fairly comprehensively described in [32], the level of equidistribution *and* alignment to a solution are often closely tied to the actual solution error through interpolation error. Optimal performance of an r-adaptive method with a fixed number of mesh points N is closely tied to achieving an optimal or nearly optimal mesh interpolation error, whereby better accuracy is obtained than with other meshes with N points. In section 3.3 we present preliminary results suggesting that Monge-Ampère based methods do indeed achieve this type of optimality.

An outline of the paper is as follows. In Section 2 we consider the basic principles of equidistribution and alignment and the underlying optimal transport method. In Section 3 we examine mesh alignment for problems with linear anisotropic solution features. In Section 4 we provide a corresponding study for problems with radially symmetric features with high curvature (singularities and rings). In Section 5 we present two numerical examples, using the results of Sections 3 and 4 to illustrate anisotropic mesh properties for more complex nonlinear features. The second example involves the solution of a nonlinear PDE with an evolving front which is both narrow

and has high curvature. Final conclusions are given in Section 6.

2. Basic principles of anisotropic mesh redistribution and the Monge-Ampère algorithm for mesh generation. In this section we describe the basic features of mesh redistribution methods and the corresponding description of the local mesh geometry in terms of a metric tensor, and analyse the Monge-Ampère mesh generation method in this context.

2.1. Mesh adaptation using a coordinate map. An effective approach for studying the redistribution of an initially uniform mesh is to generate an invertible coordinate transformation $\mathbf{x} = \mathbf{x}(\boldsymbol{\xi}) : \Omega_c \rightarrow \Omega_p$, from a fixed computational domain Ω_c to the physical domain Ω_p in which the underlying PDE is posed [32]. The mesh τ_p in Ω_p is then generated as the image of a fixed uniform computational mesh τ_c in Ω_c which has a fixed number N of elements of some prescribed shape. The alignment and other features of the mesh can then be determined by calculating the properties of the transformation $\mathbf{x}(\boldsymbol{\xi})$. Assuming for the moment that \mathbf{x} and $\boldsymbol{\xi}$ are given, and for simplicity restricting attention to the 2D case, we can consider the local properties of this transformation. Let \hat{K} be a circular set in Ω_c , centred at $\boldsymbol{\xi}_0$, such that

$$\hat{K} = \{\boldsymbol{\xi} : (\boldsymbol{\xi} - \boldsymbol{\xi}_0)^T (\boldsymbol{\xi} - \boldsymbol{\xi}_0) = \hat{r}^2\},$$

where the radius $\hat{r} \propto (|\Omega_c|/N)^{1/2}$. Linearizing about $\boldsymbol{\xi}_0$ we obtain

$$\mathbf{x}(\boldsymbol{\xi}) = \mathbf{x}(\boldsymbol{\xi}_0) + \mathbf{J}(\boldsymbol{\xi}_0)(\boldsymbol{\xi} - \boldsymbol{\xi}_0) + O(|\boldsymbol{\xi} - \boldsymbol{\xi}_0|^2),$$

and the corresponding image set $K = \mathbf{x}(\hat{K})$ in Ω_p is approximately given by

$$K = \{\mathbf{x} : (\mathbf{x} - \mathbf{x}(\boldsymbol{\xi}_0))^T \mathbf{J}^{-T} \mathbf{J}^{-1} (\mathbf{x} - \mathbf{x}(\boldsymbol{\xi}_0)) = \hat{r}^2\}.$$

As the set K and $\boldsymbol{\xi}_0$ are arbitrary, we can replace $\boldsymbol{\xi}_0$ by a general point $\boldsymbol{\xi}$. The Jacobian matrix \mathbf{J} and its determinant J , referred to simply as the Jacobian, are

$$\mathbf{J} = \begin{bmatrix} x_\xi & x_\eta \\ y_\xi & y_\eta \end{bmatrix} \quad J = \begin{vmatrix} x_\xi & x_\eta \\ y_\xi & y_\eta \end{vmatrix} = x_\xi y_\eta - x_\eta y_\xi.$$

Taking the singular value decomposition

$$\mathbf{J} = U \Sigma V^T, \quad \Sigma = \text{diag}(\sigma_1, \sigma_2),$$

it follows that

$$K = \{\mathbf{x} : (\mathbf{x} - \mathbf{x}(\boldsymbol{\xi}_0))^T U \Sigma^{-2} U^T (\mathbf{x} - \mathbf{x}(\boldsymbol{\xi}_0)) = \hat{r}^2\}.$$

so that the orientation of K is determined by the left singular vectors $U = [\mathbf{e}_1, \mathbf{e}_2]$, and the size and shape by the singular values σ_1 and σ_2 (see Fig. 2.1). We can quantify the size, shape and orientation of an element K , in the continuous sense, using the singular values and left singular vectors of \mathbf{J} , and the eigenvalues and eigenvectors of the associated *metric tensor*

$$(2.1) \quad \mathcal{M} = \mathbf{J}^{-T} \mathbf{J}^{-1}.$$

The eigenvectors of \mathcal{M} are $\mathbf{e}_1, \mathbf{e}_2$ and the eigenvalues μ_1, μ_2 , satisfy $\mu_i = 1/\sigma_i^2$ for $i = 1, 2$, with

$$\mathcal{M} = U \Sigma^{-2} U^T = \begin{bmatrix} \mathbf{e}_1 & \mathbf{e}_2 \end{bmatrix} \begin{bmatrix} \frac{1}{\sigma_1^2} & 0 \\ 0 & \frac{1}{\sigma_2^2} \end{bmatrix} \begin{bmatrix} \mathbf{e}_1^T \\ \mathbf{e}_2^T \end{bmatrix}.$$

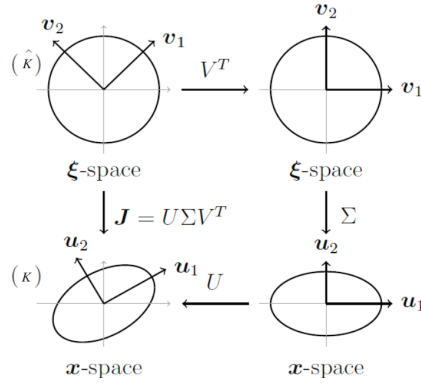


FIG. 2.1. The 2D mapping of a set $(\hat{K}, \text{a circle})$ in Ω_c , to a physical mesh element $(K, \text{an ellipse})$ in Ω_p , under $\mathbf{x}(\boldsymbol{\xi})$. The local anisotropy of the transformation is evident from the degree of compression and stretching of the ellipse.

Hence, the circumscribed ellipse of a mesh element will have principal axes in the direction of the eigenvectors \mathbf{e}_1 and \mathbf{e}_2 , with semi-lengths given by the values $\sigma_1 = \sqrt{1/\mu_1}$ and $\sigma_2 = \sqrt{1/\mu_2}$, (although we note that in the discrete case the shape, size, and orientation of a mesh element are only partially determined by this metric). The anisotropy of the mesh locally is given by the ratio of σ_1 and σ_2 . Accordingly, one natural way to measure the skewness Q_s in terms of \mathbf{J} , which provides a measure of mesh quality, is

$$(2.2) \quad Q_s = \frac{\text{tr}(\mathbf{J}^T \mathbf{J})}{2 \det(\mathbf{J}^T \mathbf{J})^{1/2}} = \frac{\sigma_1^2 + \sigma_2^2}{2\sigma_1\sigma_2} = \frac{1}{2} \left(\frac{\sigma_1}{\sigma_2} + \frac{\sigma_2}{\sigma_1} \right).$$

This measure, and the circumscribed ellipse of a mesh element, are extremely useful for visualising and analysing the degree of anisotropy [32], as we demonstrate later. We note that many other mesh quality measures exist, for example, those that take in to account small angles [37], [30], and more global measures of mesh quality such as the Kwok Chen metric [39].

2.2. Equidistribution and Alignment. One approach to mesh adaptation is to equidistribute a *scalar density function* $\rho(\mathbf{x}) > 0$ such that

$$(2.3) \quad \rho \mathbf{J} = \theta,$$

where

$$(2.4) \quad \theta = \int_{\Omega_p} \rho \, d\mathbf{x} / \int_{\Omega_c} d\boldsymbol{\xi}.$$

Equation (2.3) is the well known *equidistribution principle* which plays a fundamental role in mesh adaptation, giving direct control over the *size*, but not the alignment, of the mesh elements. For one-dimensional mesh generation it uniquely specifies the mesh and is widely used [32], with prescribed ρ often given by some estimate of the solution error.

For mesh generation in two or more dimensions the equidistribution principle (2.3) alone is insufficient to determine the mesh uniquely and additional constraints are

required [47]. Methods that augment the equidistribution principle with further local constraints are in [2], [1], [28], [29], [36], and other principles for anisotropic mesh adaptation in [48], [10], [17]. A common approach to locally controlled anisotropic mesh generation is to define the desired level of anisotropy through a metric tensor \mathbf{M} directly. Then \mathbf{M} is prescribed and the Jacobian \mathbf{J} of the map is calculated **directly** by enforcing the condition

$$(2.5) \quad Q_a \equiv \frac{\text{tr}(\mathbf{J}^T \mathbf{M} \mathbf{J})}{2 \det(\mathbf{J}^T \mathbf{M} \mathbf{J})^{1/2}} = 1.$$

This extends the skewness measure (2.2) and is referred to as the *alignment condition* [32]. As it requires that all elements are equilateral with respect to the metric \mathbf{M} it allows for direct control of the shape and orientation of a mesh element through an appropriate choice of \mathbf{M} . It follows from (2.1) that for any scaled metric tensor $\mathbf{M} = \theta \mathbf{M}$, that $\sqrt{\det(\mathbf{M})} J = \theta$, for all $\mathbf{x} \in \Omega_p$, which by (2.3) is equidistribution of a *scalar density function*

$$(2.6) \quad \rho = \sqrt{\det(\mathbf{M})}.$$

Huang [28] shows that combining the equidistribution and alignment conditions (2.3)-(2.5) gives

$$(2.7) \quad \mathbf{J}^{-T} \mathbf{J}^{-1} = \theta^{-1} \mathbf{M}, \text{ or equivalently } \mathbf{J}^T \mathbf{M} \mathbf{J} = \theta I.$$

That is, when the coordinate transformation satisfies relation (2.7), the element size, shape, and orientation are completely determined by \mathbf{M} throughout the domain. The resulting mesh will be aligned to the metric \mathbf{M} and equidistributed with respect to the measure ρ , and is referred to as *M-uniform* [32]. In general there is no unique solution to (2.7) for an a priori given \mathbf{M} , and so in practice this condition can only be enforced approximately. The choice of an appropriate metric tensor is important to the success of this method, and typically those which lead to low interpolation errors are chosen. The simplest choice is to take a scalar matrix monitor function of the form

$$(2.8) \quad \mathbf{M} = \rho I.$$

Using a variational approach this is equivalent to Winslow's variable diffusion method [56]. In this case, the singular values of \mathbf{M} , and hence the semi-lengths of the circumscribed ellipse of a mesh element, are equal (i.e., it is a circle) if (2.8) is exactly satisfied, and the corresponding mesh is isotropic. In contrast, Huang [29] has derived the exact forms of \mathbf{M} for which the resulting mesh minimizes the interpolation error of some underlying function u . Piecewise constant interpolation error can be minimised in the L^2 -norm if

$$(2.9) \quad \mathbf{M} = \kappa_{h,1} [I + \alpha_{h,1}^2 \nabla u \nabla u^T],$$

where $\alpha_{h,1}, \kappa_{h,1}$, are explicitly given parameters. For piecewise linear interpolation, the optimal metric tensor is given by

$$(2.10) \quad \mathbf{M} = \kappa_{h,2} [I + \alpha_{h,2} H(u)],$$

for suitable parameters $\kappa_{h,2}$, and $\alpha_{h,2}$, where $H(u)$ is the Hessian matrix of u .

Whilst effective in generating (essentially optimal) anisotropic meshes, these methods require finding the full Jacobian of the map at each step, which necessitates incorporating extra convexity conditions to ensure uniqueness, making the resulting (typically variational) methods challenging to implement. While a scalar matrix monitor function is simpler it can be too restrictive to produce a mesh that is aligned to a physical solution [32]. This begs the question of whether a method that equidistributes a scalar mesh density function is generally capable of producing anisotropic meshes. We demonstrate in the next section that by combining equidistribution of a *scalar density function* (2.6) with a *global* constraint, namely *optimal transport*, we can produce suitable anisotropic meshes which are relatively easy to compute. Furthermore, for certain features, we are able to derive analytically the precise form of the metric \mathbf{M} to which these meshes align and show it has a similar form to those metrics given in (2.9) and (2.10) which minimise interpolation error. More specifically, for these features the form of the metric we derive for Monge-Ampère has precisely the same eigenvectors and preliminary numerical results indicate the eigenvalue approximations are close. A detailed study of the implications of this in terms of the the mesh error produced by the Monge-Ampère method is the subject of current research.

2.3. Mesh redistribution using global constraints and the Monge-Ampère equation. In contrast to the previous approaches we now augment condition (2.3) with *global constraints* to define the mesh, in particular *Optimal Transport Regularisation*. We seek to find a mesh mapping, satisfying (2.3), which is as close as possible (in a suitable norm) to the identity.

DEFINITION 2.1. *An optimally equidistributed mapping $\mathbf{x}(\boldsymbol{\xi})$ is one which minimizes the functional I_2 , where*

$$I_2 = \int_{\Omega_c} |\mathbf{x}(\boldsymbol{\xi}) - \boldsymbol{\xi}|^2 d\mathbf{x},$$

over all invertible $\mathbf{x}(\boldsymbol{\xi})$ for which the equidistribution condition (2.3) also holds.

The following result gives both the existence and uniqueness of such a map and a means to calculate it.

THEOREM 2.2. *(Brenier [4], Caffarelli [11]) There exists a unique optimal mapping $\mathbf{x}(\boldsymbol{\xi})$ satisfying the equidistribution condition (2.3). This map has the same regularity as ρ . Furthermore, the map $\mathbf{x}(\boldsymbol{\xi})$ can be written as the gradient (with respect to $\boldsymbol{\xi}$) of a unique (up to constants) convex mesh potential $P(\boldsymbol{\xi}, t)$, so that*

$$\mathbf{x}(\boldsymbol{\xi}) = \nabla_{\boldsymbol{\xi}} P(\boldsymbol{\xi}), \quad \Delta_{\boldsymbol{\xi}} P(\boldsymbol{\xi}) > 0.$$

It is immediate that if $\mathbf{x} = \nabla_{\boldsymbol{\xi}} P$ then the Jacobian matrix \mathbf{J} is *symmetric* and is the Hessian matrix of P , i.e., in two-dimensions

$$\mathbf{J} = \mathbf{J}^T = \begin{bmatrix} x_{\xi} & x_{\eta} \\ y_{\xi} & y_{\eta} \end{bmatrix} = \begin{bmatrix} P_{\xi\xi} & P_{\xi\eta} \\ P_{\eta\xi} & P_{\eta\eta} \end{bmatrix} =: \mathbf{H}(P).$$

Furthermore, the Jacobian determinant J is the Hessian determinant of P such that

$$J = x_{\xi}y_{\eta} - x_{\eta}y_{\xi} = P_{\xi\xi}P_{\eta\eta} - P_{\xi\eta}^2 := H(P).$$

The equidistribution condition (2.3) thus becomes

$$(2.11) \quad \rho(\nabla P)H(P) = \theta,$$

which is the *Monge-Ampère equation*. This fully nonlinear equation is generally augmented with Neumann or periodic boundary conditions, where the boundary of Ω_c is mapped to the boundary of Ω_p [9], [17]. However solutions have also been attained for non-standard boundary conditions [24] and so it has the potential to be applied to more complex geometries. The gradient of P thereby gives the unique map \mathbf{x} . Methods to solve (2.11) are described in [10],[17], [15], and form the basis of effective and robust mesh redistribution algorithms in two and three dimensions [5]. These methods have several advantages in practical applications. In particular, they only involve solving scalar equations, they deal naturally with complex boundaries, and they can be easily coupled to existing software both for solving certain PDEs [9], [6] (see also Section 5) and also for approximating functions in operational data assimilation codes [46].

While these meshes satisfy the local scaling condition (2.3), regions where ρ is large will result in small mesh elements and vice versa. However, it is not immediately clear what shape and orientation the elements inherit from (2.11), although in [17] it is shown these meshes minimise the global distortion as measured by the integral of

$$\text{tr}(\mathbf{J}^T \mathbf{J}) = \sigma_1^2 + \sigma_2^2.$$

We study this further here by seeking exact solutions of (2.11) and the corresponding meshes. To do this we use the following result:

LEMMA 2.3. *For a given scalar function $\rho(\mathbf{x})$, the solution of (2.11) is unique, and the corresponding mesh has a unique metric tensor \mathbf{M} , for which*

$$\rho = \sqrt{\det(\mathbf{M})}.$$

Proof. Given $\rho(\mathbf{x})$, it follows from Theorem 2.2 that the Monge-Ampère equation (2.11) has a unique solution P . Hence we may uniquely construct the Jacobian matrix $\mathbf{J} = \mathbf{H}(P)$ and metric tensor $\mathbf{M} = \theta \mathbf{J}^{-1} \mathbf{J}^{-T}$. Since $J \sqrt{\det(M)} = \theta = \rho J$ from (2.11), the result follows. \square

We can calculate the explicit form of \mathbf{M} as follows: Assume that we are considering problems in R^n . Since \mathbf{J} is *symmetric* its eigenvalues $\lambda_1, \lambda_2, \dots, \lambda_n$ are equal to its singular values $\sigma_1, \sigma_2, \dots, \sigma_n$ and its (unit) eigenvectors $\mathbf{e}_1, \mathbf{e}_2 \dots \mathbf{e}_n$ are orthogonal. The Jacobian can therefore be expressed in the form

$$\mathbf{J} = \lambda_1 \mathbf{e}_1 \mathbf{e}_1^T + \lambda_2 \mathbf{e}_2 \mathbf{e}_2^T + \dots + \lambda_n \mathbf{e}_n \mathbf{e}_n^T$$

implying $\rho = \theta/J = \theta/\lambda_1 \lambda_2 \dots \lambda_n$. It follows from (2.7) that the metric tensor \mathbf{M} for which the mesh is M-uniform has the same (unit) orthogonal eigenvectors \mathbf{e}_i and eigenvalues $\mu_i = \theta/\lambda_i^2$ and can be expressed in the form

$$(2.12) \quad \mathbf{M} = \theta (\lambda_1^{-2} \mathbf{e}_1 \mathbf{e}_1^T + \lambda_2^{-2} \mathbf{e}_2 \mathbf{e}_2^T + \dots + \lambda_n^{-2} \mathbf{e}_n \mathbf{e}_n^T).$$

Observe that this metric tensor is not generally a scalar multiple of the identity matrix and differs from the Jacobian.

3. Alignment to a linear feature. In this section we consider how well the meshes generated by solving (2.11) represent two-dimensional linear features, looking at the alignment, scaling, skewness and anisotropy of the meshes constructed for both single shocks and for shocks meeting orthogonally. These are prototypes of the more complex forms of shocks and fronts found in applications [51],[6]. Our study will centre on certain exact solutions of (2.11). To obtain these solutions we will consider simple domains with periodic boundary conditions. Whilst clearly not representative of many applications, we can still use the results obtained as a good local description of the mesh close to linear regions of more complex features in a more complex geometry.

3.1. Construction of an exact map. Let the scalar density $\rho(\mathbf{x})$ take the form

$$(3.1) \quad \rho(\mathbf{x}) = \rho_1(\mathbf{x} \cdot \mathbf{e}_1)\rho_2(\mathbf{x} \cdot \mathbf{e}_2) := \rho_1(\bar{x})\rho_2(\bar{y}).$$

where $\mathbf{e}_1 = [a, b]^T$, $\mathbf{e}_2 = [-b, a]^T$, $a^2 + b^2 = 1$. Furthermore, assume that the periodic function ρ_1 is large when $\mathbf{x} \cdot \mathbf{e}_1 = c$, and the periodic function ρ_2 is large when $\mathbf{x} \cdot \mathbf{e}_2 = d$, for given constants c , and d , and that they are close to 1 otherwise. Note that the solution of the equidistribution equation (2.1) would be expected to concentrate mesh points along the lines given by either of the conditions $\mathbf{x} \cdot \mathbf{e}_1 = c$ or $\mathbf{x} \cdot \mathbf{e}_2 = d$.

THEOREM 3.1. *If the scalar density $\rho(\mathbf{x})$ has the form given in (3.1) then the Monge-Ampère equation can be solved exactly in a doubly periodic domain. For the resulting mapping the uniquely derived metric tensor \mathbf{M} satisfies (2.12), and the mesh aligns exactly along the linear features.*

Proof. To show this result we consider the case where $\Omega_c = \Omega_p = (0, 1)^2$ and the solution to (2.11) is a *doubly-periodic* map from $\Omega_c \rightarrow \Omega_p$, such that $\boldsymbol{\xi} = [\xi, \eta] \in \Omega_c$, $\mathbf{x} = [x, y] \in \Omega_p$. The value of θ defined in (2.4) is calculated as below.

LEMMA 3.2. *If θ_1 and θ_2 are defined as follows*

$$(3.2) \quad \theta_1 = \int_0^1 \rho_1(s) ds, \quad \text{and} \quad \theta_2 = \int_0^1 \rho_2(s) ds.$$

then $\theta = \theta_1\theta_2$.

Proof. By the definition in (2.4)

$$\theta = \int_{\Omega_p} \rho(\mathbf{x}) d\mathbf{x} / \int_{\Omega_c} d\boldsymbol{\xi} = \int_0^1 \int_0^1 \rho_1(\mathbf{x} \cdot \mathbf{e}_1)\rho_2(\mathbf{x} \cdot \mathbf{e}_2) dx dy / \int_0^1 \int_0^1 d\xi d\eta.$$

Introducing coordinates $\bar{x} = \mathbf{x} \cdot \mathbf{e}_1$ and $\bar{y} = \mathbf{x} \cdot \mathbf{e}_2$, since \mathbf{e}_1 and \mathbf{e}_2 are orthonormal it follows immediately that $dx dy = d\bar{x} d\bar{y}$, so from double-periodicity of ρ we have

$$\theta = \int_0^1 \int_0^1 \rho_1(\bar{x})\rho_2(\bar{y}) d\bar{x}d\bar{y} = \int_0^1 \rho_1(\bar{x}) d\bar{x} \int_0^1 \rho_2(\bar{y}) d\bar{y} = \theta_1\theta_2.$$

□

It follows that the Monge-Ampère equation (2.11) can be expressed in the form

$$(3.3) \quad H(P) \rho_1(\bar{x})\rho_2(\bar{y}) = \theta_1\theta_2.$$

Fortuitously, this fully nonlinear PDE is separable and has an exact solution, from which we can calculate the mesh, the metric tensor and the skewness Q_s .

LEMMA 3.3. *For appropriately defined functions $F(t)$ and $G(t)$, there exists a doubly-periodic, separable solution to (3.3) of the form*

$$(3.4) \quad P(\xi, \eta) = F(\xi \cdot \mathbf{e}_1) + G(\xi \cdot \mathbf{e}_2).$$

Furthermore, this solution is unique up to an arbitrary constant of addition.

Proof. Differentiating (3.4) with respect to ξ and η gives

$$(3.5) \quad \mathbf{x} = \nabla_\xi P = \mathbf{e}_1^T F' + \mathbf{e}_2^T G'.$$

Differentiating again with respect to ξ and η we obtain

$$P_{\xi\xi} = a^2 F'' + b^2 G'', \quad P_{\xi\eta} = abF'' - abG'', \quad P_{\eta\eta} = b^2 F'' + a^2 G''.$$

Hence

$$\mathbf{H}(P) = \begin{bmatrix} \mathbf{e}_1 & \mathbf{e}_2 \end{bmatrix} \begin{bmatrix} F'' & 0 \\ 0 & G'' \end{bmatrix} \begin{bmatrix} \mathbf{e}_1^T \\ \mathbf{e}_2^T \end{bmatrix}$$

and

$$(3.6) \quad \begin{aligned} H(P) &= (a^2 F'' + b^2 G'')(b^2 F'' + a^2 G'') - (abF'' - abG'')^2 \\ &= (b^2 + a^2)^2 F'' G'' = F'' G''. \end{aligned}$$

Substituting (3.6) into the Monge-Ampère equation (3.3) we obtain

$$F''(\bar{\xi})G''(\bar{\eta}) \rho_1(\bar{x})\rho_2(\bar{y}) = \theta_1\theta_2,$$

where $\bar{\xi} = \xi \cdot \mathbf{e}_1$ and $\bar{\eta} = \xi \cdot \mathbf{e}_2$. Now by (3.5) it follows that

$$\bar{x} = \mathbf{x} \cdot \mathbf{e}_1 = \mathbf{e}_1^T \cdot \mathbf{e}_1 F' + \mathbf{e}_2^T \cdot \mathbf{e}_1 G' = F'(\bar{\xi}), \quad \bar{y} = \mathbf{x} \cdot \mathbf{e}_2 = \mathbf{e}_1^T \cdot \mathbf{e}_2 F' + \mathbf{e}_2^T \cdot \mathbf{e}_2 G' = G'(\bar{\eta}).$$

Thus, there is a solution of (3.3) of the form (3.4) provided F and G satisfy

$$(3.7) \quad F''(\bar{\xi})\rho_1(F'(\bar{\xi})) = \theta_1\alpha \quad \text{and} \quad G''(\bar{\eta})\rho_2(G'(\bar{\eta})) = \theta_2/\alpha,$$

where α is (at this stage) an arbitrary constant. From the identities $\bar{x} = F'$ and $\bar{y} = G'$ it follows that

$$(d\bar{x}/d\bar{\xi})\rho_1(\bar{x}(\bar{\xi})) = \theta_1\alpha.$$

Hence, for a suitable constant c_1 ,

$$R_1(\bar{x}) \equiv \int_0^{\bar{x}} \rho_1(s) ds = \theta_1\alpha \bar{\xi} + c_1.$$

Since the map from Ω_c to Ω_p is doubly periodic, $\bar{x}(0) = 0$ and $\bar{x}(1) = 1$. Thus, $c_1 = 0$ and from the definition of θ_1 , $\alpha = 1$. Hence, we have

$$(3.8) \quad \bar{x} = \mathbf{x} \cdot \mathbf{e}_1 = R_1^{-1}(\theta_1 \bar{\xi}) = R_1^{-1}(\theta_1 \xi \cdot \mathbf{e}_1).$$

A similar identity follows for \bar{y} with related function R_2 and constant c_2 , giving

$$(3.9) \quad \bar{y} = \mathbf{x} \cdot \mathbf{e}_2 = R_2^{-1}(\theta_2 \bar{\eta}) = R_2^{-1}(\theta_2 \boldsymbol{\xi} \cdot \mathbf{e}_2).$$

These define the functions F and G , and the uniqueness (3.4) follows from the uniqueness of solutions of the Monge-Ampère equation (3.3) with periodic boundary conditions [42]. \square

We now calculate the Jacobian of the map \mathbf{J} and the metric tensor \mathbf{M} . Note that

$$\mathbf{x} = \nabla_{\xi} P = \mathbf{e}_1^T R_1^{-1}(\theta_1 \bar{\xi}) + \mathbf{e}_2^T R_2^{-1}(\theta_2 \bar{\eta})$$

and

$$(3.10) \quad \mathbf{J} = \frac{\theta_1}{\rho_1(F'(\bar{\xi}))} \mathbf{e}_1 \mathbf{e}_1^T + \frac{\theta_2}{\rho_2(G'(\bar{\eta}))} \mathbf{e}_2 \mathbf{e}_2^T$$

with eigen/singular values

$$(3.11) \quad \lambda_1 = \theta_1/\rho_1, \quad \text{and} \quad \lambda_2 = \theta_2/\rho_2.$$

From (2.7), we infer that the mesh will be aligned to the metric

$$(3.12) \quad \mathbf{M} = \frac{\theta_2 \rho_1^2}{\theta_1} \mathbf{e}_1 \mathbf{e}_1^T + \frac{\theta_1 \rho_2^2}{\theta_2} \mathbf{e}_2 \mathbf{e}_2^T,$$

with eigenvalues

$$(3.13) \quad \mu_1 = \theta_2 \rho_1^2 / \theta_1 \quad \text{and} \quad \mu_2 = \theta_1 \rho_2^2 / \theta_2.$$

These explicit forms for \mathbf{J} and \mathbf{M} reveal the alignment properties of the map. Specifically, the eigendecomposition of \mathbf{J} in (3.10) shows that the semi-axes of the ellipses described in Section 2 are parallel to \mathbf{e}_1 and \mathbf{e}_2 and thus align with the linear features. The linear features we are aiming to represent arise when $\mathbf{x} \cdot \mathbf{e}_1 = \bar{x} = c$ and $\mathbf{x} \cdot \mathbf{e}_2 = \bar{y} = d$ so that respectively either ρ_1 is large and ρ_2 is not, or ρ_2 is large and ρ_1 is not. This ends the proof of Theorem 3.1. \square

We can also study the mesh away from the features.

COROLLARY 3.4. *Away from the linear features the mesh is in general isotropic and its skewness is given explicitly by*

$$(3.14) \quad Q_s = \frac{1}{2} \left(\frac{\theta_1 \rho_2}{\theta_2 \rho_1} + \frac{\theta_2 \rho_1}{\theta_1 \rho_2} \right)$$

Proof. Substituting the expressions from our explicit solution into (2.2) gives

$$(3.15) \quad Q_s = \frac{1}{2} \left(\frac{\theta_1 \rho_2}{\theta_2 \rho_1} + \frac{\theta_2 \rho_1}{\theta_1 \rho_2} \right)$$

The value of Q_s depends upon the relative size of the density functions ρ_1 and ρ_2 , both locally and globally. \square

Along the linear features, where either $\rho_1 \gg 1$ and $\rho_2 = \mathcal{O}(1)$, or $\rho_2 \gg 1$ and $\rho_1 = \mathcal{O}(1)$, the mesh elements will be anisotropic and skew. Away from the linear feature, where ρ_1 and ρ_2 are both of order one, the degree of anisotropy and skewness is controlled by the relative values of the density functions in the entire domain, θ_1 and θ_2 . As these are averaged quantities the ratio is again in general of order one. We give precise estimates presently for these in two examples below.

3.2. Examples. We now consider two specific analytical examples which illustrate the theory described above.

3.2.1. Example 1: A single periodic shock. As a first example we consider a periodic array of linear features aligned at $\pi/4$ to the coordinate axes so that $\mathbf{e}_1 = [1/\sqrt{2}, 1/\sqrt{2}]^T$ and $\mathbf{e}_2 = [-1/\sqrt{2}, 1/\sqrt{2}]^T$. As a periodic mesh density we take

$$(3.16) \quad \rho(\mathbf{x}) = 1 + \alpha \sum_{n=-\infty}^{\infty} \operatorname{sech}^2(\alpha(\sqrt{2}\bar{x} - n)) := \rho_1(\bar{x}), \quad \bar{x} = \mathbf{x} \cdot \mathbf{e}_1,$$

with $\alpha = 50$. This density is concentrated along a set of lines of width $1/50\sqrt{2}$ which are parallel to \mathbf{e}_2 , one of which passes through the coordinate origin, and the others arising when $\bar{x} = \pm 1/\sqrt{2}, \pm 2/\sqrt{2}, \dots$. Note that along each such line $\rho = 51 + \mathcal{O}(\exp(-50))$ and away from each such line $\rho = 1 + \mathcal{O}(\exp(-50))$. A direct calculation gives

$$\theta = \int_{\Omega_p} \rho(\mathbf{x}) \, d\mathbf{x} = 3 + \mathcal{O}(\exp(-50)),$$

and

$$R_1(\bar{x}) = \bar{x} + \frac{1}{\sqrt{2}} \sum_{n=-\infty}^{\infty} [\tanh(50(\sqrt{2}\bar{x} - n)) - \tanh(-50n)].$$

The inverse of R_1 can be computed by fitting a spline through the data points $(R_1(\bar{x}_i), \bar{x}_i)$, for $\bar{x}_i = \sqrt{2}i/N'$, $i = 0, \dots, N'$. A plot of R_1^{-1} is given in Fig. 3.1 for $N' = 1000$. Observe that this function is very flat close to $\bar{x} = 0, 1/\sqrt{2}, \sqrt{2}$, and

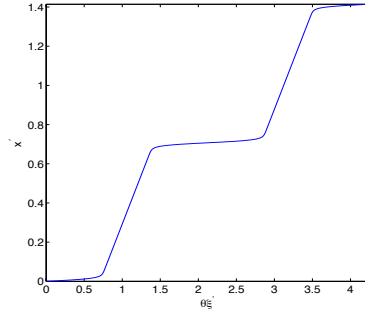


FIG. 3.1. The function R_1^{-1} for Example 1, $\theta = 3 + \mathcal{O}(\exp(-50))$.

mesh points will be concentrated at these values. It follows immediately that $\theta_1 = \theta$, $\theta_2 = 1$, $R_2(\bar{y}) = \bar{y}$, and also

$$\bar{\xi} = (\xi + \eta)/\sqrt{2}, \quad \bar{\eta} = (-\xi + \eta)/\sqrt{2}, \quad x = (\bar{x} + \bar{y})/\sqrt{2}, \quad \text{and} \quad y = (-\bar{x} + \bar{y})/\sqrt{2}.$$

Therefore, from (3.8) and (3.9) it follows that

$$x = \frac{1}{\sqrt{2}} [R_1^{-1}(\theta(\xi + \eta)/\sqrt{2}) + ((-\xi + \eta)/\sqrt{2})], \quad y = \frac{1}{\sqrt{2}} [-R_1^{-1}(\theta(\xi + \eta)/\sqrt{2}) + ((-\xi + \eta)/\sqrt{2})].$$

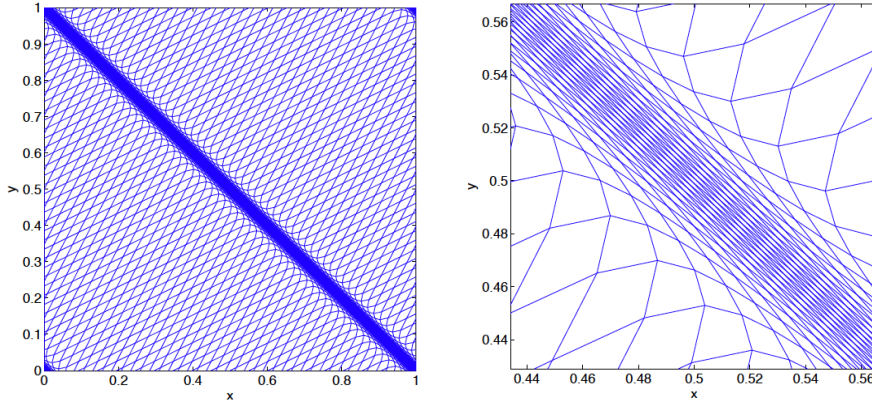


FIG. 3.2. (Left) A (60×60) mesh generated from the analytical solution of the Monge-Ampère equation for the density function in Example 1. (Right) A zoom of the region along the shock where the density function is large.

A plot of the resulting mesh is shown in Fig. 3.2 (Left) with a close-up in Fig. 3.2 (Right). This mesh is the image of a uniform square computational mesh and has the points $(x(\xi_i, \eta_j), y(\xi_i, \eta_j))$, where $\xi_j = \eta_j = j/(n-1)$, for $i, j = 0, \dots, N-1$ and $N = 60$. We see that not only is the mesh concentrated along the linear features parallel to \mathbf{e}_2 but it is also closely aligned with this vector. Away from the linear feature the mesh has a distinctive diamond shape, with each diamond of uniform size and with axes in the directions \mathbf{e}_1 and \mathbf{e}_2 . The close-up shows the diamonds stretched along the linear feature and then smoothly evolving into uniform diamonds. The skewness of the mesh can be calculated directly from the Jacobian. The eigenvalues of \mathbf{J} (which coincide with the singular values) are given from (3.11) by $\lambda_1 = \theta/\rho$ and $\lambda_2 = 1$. Ignoring exponentially small terms, we have $\lambda_1 = 3/51$ within the linear feature, and $\lambda_1 = 3$ away from the linear feature, implying that the skewness measure Q_s in (2.2) is given by $Q_s = 8.529$ within the linear feature and $Q_s = 1.667$ outside the linear feature. Although the specific example given here is not very anisotropic, extremely anisotropic meshes, whilst simple to compute, are difficult to visualise.

LEMMA 3.5. *A mesh generated by solving Monge-Ampère (2.11), with a density function of the form (3.16), concentrates mesh points along a set of lines of width $\epsilon = 1/\alpha\sqrt{2}$, where the mesh is anisotropic with skewness measure Q_s (3.14), which is inversely proportional to ϵ .*

Proof. Ignoring exponentially small terms, the eigenvalues of the Jacobian of the mesh mapping where the density function is at a maximum are $\lambda_1 = \theta/(1 + \alpha)$ and $\lambda_2 = 1$, hence the skewness $Q_s = 1/2((1 + \alpha)/\theta + \theta/(1 + \alpha))$. Since $\alpha \gg 1$ and θ is order 1

$$Q_s \approx \frac{1}{\sqrt{2}\theta\epsilon}.$$

□

3.2.2. Example 2: Two orthogonal shocks. Consider orthogonal shocks of different widths and magnitudes with the associated scalar density $\rho(\mathbf{x}) = \rho_1(\bar{x})\rho_2(\bar{y})$.

Here $\rho_1(\bar{x})$, θ_1 , and $R_1(\bar{x})$ are the same as in Example 1, and

$$\rho_2(\bar{y}) = 1 + 10 \sum_{m=-\infty}^{\infty} \operatorname{sech}^2(25(\sqrt{2}\bar{y} - m)).$$

A direct calculation gives $\theta_2 = 1.8 + \mathcal{O}(\exp(-25))$, and

$$R_2(\bar{y}) = \bar{y} + \frac{\sqrt{2}}{5} \sum_{m=-\infty}^{\infty} [\tanh(25(\sqrt{2}\bar{y} - m)) - \tanh(-25m)].$$

The inverse of R_2 can be computed in the same manner as for R_1 in the previous case. Using the same procedures as in Example 1, we have

$$\begin{aligned} x &= \frac{1}{\sqrt{2}} [R_1^{-1}(\theta_1(\xi + \eta)/\sqrt{2}) + R_2^{-1}(\theta_2(-\xi + \eta)/\sqrt{2})], \\ y &= \frac{1}{\sqrt{2}} [-R_1^{-1}(\theta_1(\xi + \eta)/\sqrt{2}) + R_2^{-1}(\theta_2(-\xi + \eta)/\sqrt{2})]. \end{aligned}$$

A plot of the image of a uniform mesh under this map is shown in Fig. 3.3, where we

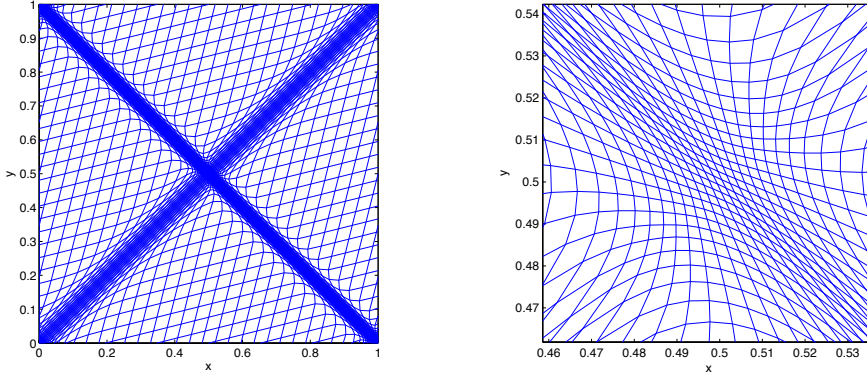


FIG. 3.3. (Left) A (60×60) mesh generated from the analytical solution of the Monge-Ampère equation for the density function in Example 2. (Right) A zoom of the region along the shock where the density function is large.

see the excellent alignment of the mesh to the two linear features. Note also the very smooth transition of the mesh from one feature to the other. The eigenvalues λ_1, λ_2 (up to exponentially small terms) are:

1. First linear feature alone: $\lambda_1 = 3/51, \quad \lambda_2 = 1.8,$
2. Second linear feature alone: $\lambda_1 = 3, \quad \lambda_2 = 1.8/11,$
3. Intersection of the two linear features: $\lambda_1 = 3/51, \quad \lambda_2 = 1.8/11,$
4. Outside the two linear features: $\lambda_1 = 3, \quad \lambda_2 = 1.8.$

The respective values of the skewness measure Q_s are

1. $Q_s = 15.31,$
2. $Q_s = 9.19,$
3. $Q_s = 1.57,$
4. $Q_s = 1.13.$

We deduce that away from the linear features and also in the intersection of the two features the mesh in Example 2 is less skew than that of Example 1.

3.3. Interpolation Error. We now show briefly for the example of a linear shock how the mesh generated using the Monge-Ampère approach significantly reduces the error when using piecewise linear interpolation to approximate the anisotropic solution $u(\mathbf{x})$. In particular we consider a function of the form $u(\mathbf{x}) = u(\mathbf{x} \cdot \mathbf{e}_1) \equiv u(\bar{x})$ for which the Hessian has the special form $H(u) = u'' \mathbf{e}_1 \mathbf{e}_1^T$. Given a density function of the form

$$(3.17) \quad \rho(\mathbf{x}) = 1 + \alpha u_{\bar{x}\bar{x}} \equiv \rho_1(\bar{x})$$

it then follows from (3.12) that the metric tensor to which the mesh generated by the Monge-Ampère method aligns is given by

$$M = [I + \alpha H(u)],$$

which has a similar form to the optimal metric tensor for interpolating the function $u(\mathbf{x})$ with a piecewise linear function, and which is given by (2.10).

For a simple numerical example, we take ρ_1 to be the density function given in (3.16) and take

$$u_{\bar{x}\bar{x}} = \text{sech}^2(\alpha(\sqrt{2\bar{x}} - 1)).$$

This function exhibits a linear feature of width $1/\alpha$ aligned in the direction \mathbf{e}_1 . Taking first $\alpha = 50$, we approximate u using a piecewise linear function, and then compute the interpolation error at the centre of each mesh cell. This is shown in Fig. 3.4 where we compare the error calculated on a *uniform mesh* with that calculated on the mesh generated using the Monge-Ampère method. We can see from this calculation that the error on the mesh generated with the Monge-Ampère derived mesh (Right) is significantly reduced when compared with the error on a uniform mesh with the same number of grid points (Left). For a second calculation, we consider the effect of increasing α , corresponding to a linear feature of decreasing width. The maximum relative interpolation error when using the two meshes above is shown in Fig. 3.5. In this figure we can see clearly that the interpolation error calculated on the uniform mesh increases with increasing α whereas that calculated on the Monge-Ampère mesh remains constant as α increases and is much lower than the uniform mesh error.

The independence of α and the interpolation error calculated on the mesh generated using the Monge-Ampère method leads us to conjecture that it is within a constant of the error on the optimal mesh (since, by its being optimal, it must also have error independent of the shock width α). This is consistent with the close similarity of the corresponding metric tensor. A careful discussion and analysis of the interpolation error of much more general functions $u(\mathbf{x})$ on meshes generated using the Monge-Ampère method, is the subject of ongoing research and will be addressed in a future paper.

4. Alignment to a radially symmetric feature. In this section we look at radially symmetric features with small length scales. These tend to arise in applications either in the form of singularities (such as in problems with blow-up [13],[9]) or as thin rings, which arise directly as in singular solutions to the nonlinear Schrödinger equation [44], or approximately as in the curved fronts we study in Section 5. We proceed as in the last section in that we study the alignment and scaling properties

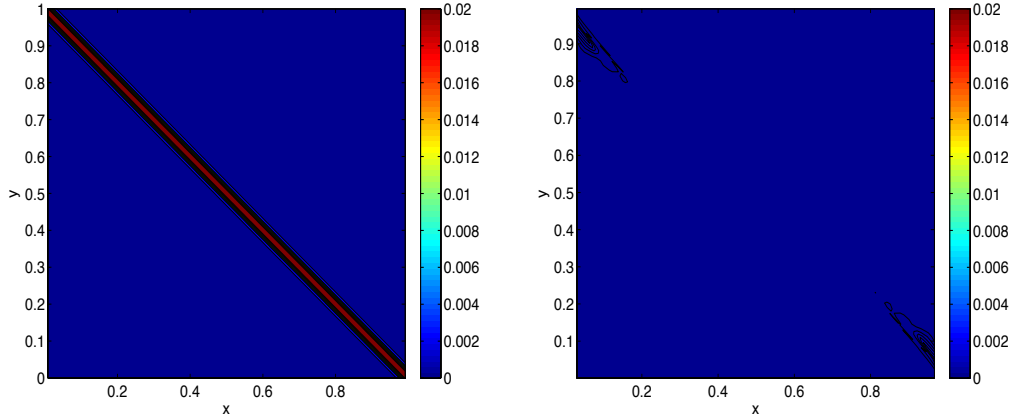


FIG. 3.4. The relative piecewise linear interpolation error of u , where $u_{\bar{x}\bar{x}} = \text{sech}^2(50(\sqrt{2\bar{x}}-1))$, on a (60×60) mesh generated with the Monge-Ampère method and using the density function $\rho = 1 + 50|u_{\bar{x}\bar{x}}|$ (Right), and on a (60×60) uniform mesh (Left).

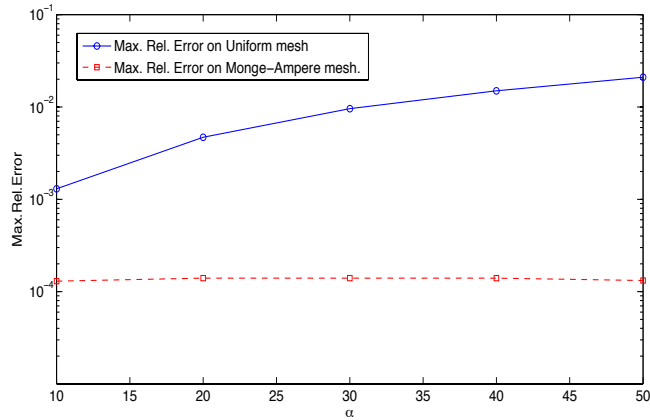


FIG. 3.5. A comparison of the maximum relative piecewise linear interpolation error for u as α varies, where $u_{\bar{x}\bar{x}} = \text{sech}^2(\alpha(\sqrt{2\bar{x}}-1))$, on a mesh generated with the Monge-Ampère method using the density function $\rho = 1 + 50|u_{\bar{x}\bar{x}}|$ and on a uniform mesh with (60×60) meshpoints.

of certain exact radially symmetric solutions of the Monge-Ampère equation. We also study the global geometry and anisotropy of the resulting meshes, including the behaviour close to the domain boundaries. Initially we look at analytic solutions in radially symmetric domains and then see how these solutions perturb in domains without radial symmetry.

4.1. Exact radially symmetric solutions of the Monge-Ampère equation. We begin by considering the form of the Monge-Ampère equation (2.11) and mesh mapping in the case of radially symmetric solutions in radially symmetric domains. We then consider the nature of the meshes obtained when the density function approximates a Dirac measure. Therefore, we let $(x, y) = (R \cos(\Phi), R \sin(\Phi))$ and $(\xi, \eta) = (r \cos(\phi), r \sin(\phi))$, so that $R = \sqrt{x^2 + y^2}$, and $r = \sqrt{\xi^2 + \eta^2}$, and assume

that a circle of radius r in Ω_c maps to a circle of radius R in Ω_p , under the map $R = R(r)$. Furthermore we assume that the boundary of a disc Ω_c maps to the boundary of a further disc Ω_p , such that $r = R$ at the boundary. For a density function that is locally radially symmetric about the origin

$$\rho(\mathbf{x}) = \rho(R),$$

it follows, after some standard manipulations, that there is a radially symmetric solution $P(r)$ of the Monge-Ampère equation satisfying

$$\Phi = \phi, \quad R = P_r \quad \text{and} \quad P_{\xi\xi}P_{\eta\eta} - P_{\xi\eta}^2 = \frac{P_r P_{rr}}{r} = \frac{R}{r} \frac{dR}{dr}.$$

The Monge-Ampère equation (2.11) can be written as

$$(4.1) \quad \rho(R) \frac{R}{r} \frac{dR}{dr} = \theta,$$

where

$$(4.2) \quad \theta = \frac{\int_{\Omega_p} \rho(R) R \, dR \, d\Phi}{\int_{\Omega_c} r \, dr \, d\phi}.$$

We can now study the local structure of the map defined by this expression.

LEMMA 4.1. (a) *The eigenvectors of the Jacobian of the map are*

$$(4.3) \quad \mathbf{e}_1 = \frac{1}{r} \begin{bmatrix} \xi \\ \eta \end{bmatrix}, \quad \mathbf{e}_2 = \frac{1}{r} \begin{bmatrix} -\eta \\ \xi \end{bmatrix}.$$

The eigenvector \mathbf{e}_1 is in the direction of increasing r and \mathbf{e}_2 orthogonal to this in the direction of increasing Φ (ϕ).

(b) *The corresponding eigenvalues are*

$$(4.4) \quad \lambda_1 = (r\psi)' = \frac{dR}{dr}, \quad \text{and} \quad \lambda_2 = \psi = \frac{R}{r} = \theta/(\rho(R)\lambda_1).$$

(c) *The skewness measure (2.2) takes the form*

$$(4.5) \quad Q_s = \frac{1}{2} \left(\frac{rR'}{R} + \frac{R}{rR'} \right).$$

Proof. Letting $\psi := R(r)/r$, it follows from straightforward manipulations, that the Jacobian matrix (expressed in (ξ, η) coordinates) is

$$\begin{aligned} \mathbf{J} &= \begin{bmatrix} \psi + \frac{\xi^2 \psi'}{r} & \frac{\xi \eta \psi'}{r} \\ \frac{\xi \eta \psi'}{r} & \psi + \frac{\eta^2 \psi'}{r} \end{bmatrix}, \\ &= \begin{bmatrix} \frac{\xi}{r} & \frac{\eta}{r} \\ \frac{-\eta}{r} & \frac{\xi}{r} \end{bmatrix} \begin{bmatrix} (r\psi)' & 0 \\ 0 & \psi \end{bmatrix} \begin{bmatrix} \frac{\xi}{r} & \frac{-\eta}{r} \\ \frac{\eta}{r} & \frac{\xi}{r} \end{bmatrix}, \end{aligned}$$

and so $J = \psi(r\psi)'$, hence the result follows. \square

By (2.12) such a mesh will be aligned to the metric tensor

$$(4.6) \quad \mathbf{M} = \begin{bmatrix} \frac{\xi}{r} & \frac{\eta}{r} \\ -\frac{\eta}{r} & \frac{\xi}{r} \end{bmatrix} \begin{bmatrix} \frac{\theta}{(R')^2} & 0 \\ 0 & \frac{\theta}{\psi^2} \end{bmatrix} \begin{bmatrix} \frac{\xi}{r} & -\frac{\eta}{r} \\ \frac{\eta}{r} & \frac{\xi}{r} \end{bmatrix}.$$

Integrating (4.1) we obtain

$$(4.7) \quad \int_0^R \rho(R') R' dR' = \theta \frac{r^2}{2}.$$

For given $\rho(R) > 0$ this expression implicitly defines a unique monotone increasing function $R(r)$. Once this function is obtained we can explicitly write down the eigenvalues of the Jacobian matrix and thus quantify the skewness of a mesh element.

NOTE: These results can easily be extended to n -dimensional radially symmetric problems. In this case the generalisation of (4.7) is simply

$$(4.8) \quad \int_0^R \rho(R') (R')^{n-1} dR' = \theta \frac{r^n}{n}.$$

We now consider possible forms for the density function $\rho(R)$ which will concentrate the mesh close to certain features. Specifically, consider

$$(4.9) \quad \rho(R) = 1 + f(R)$$

where the function $f(R)$ is an approximation to a Dirac measure with mass

$$\frac{\gamma}{2} \equiv \int_0^\infty f(R) R dR,$$

which is large close to $R = a$ and small elsewhere. If $a = 0$ this density function will lead to a mesh concentrated at the origin, which will be appropriate for resolving the locally radially symmetric singular solutions encountered when studying blow-up type problems [10],[13]. If $a > 0$ this will lead to a mesh concentrated in a thin ring of radius a . This will be appropriate for resolving either a problem with a ring type singularity [44] or (as we shall see when we study the Buckley-Leverett equation in Section 5) the resolution of a front in the solution of a PDE which has locally high curvature.

If we substitute the expression (4.9) into (4.7) we can calculate the relation between r and R and hence determine the resulting mesh. It is immediately evident that there are three separate regions (two if $a = 0$).

1. An *inner region* given by $R \ll a$ for which $\rho(R) \approx 1$ and hence

$$(4.10) \quad R \approx \sqrt{\theta} r.$$

In this region the mesh is uniform and isotropic and has a scaling factor of $\sqrt{\theta}$. The value of θ depends upon the boundary conditions and we discuss it presently.

2. A *singular region* in which $R \approx a$ where the mesh is concentrated close to the singular feature. The precise nature of this depends on the function $f(R)$.

3. An *outer region* given by $R \gg a$, away from the singular feature and including the boundary. The form of the mesh in this outer region is given below.

THEOREM 4.2. *Let $R \gg a$ and assume that $\rho(R)$ takes the form (4.9). Then*

(a) *The mesh is given by the expression*

$$(4.11) \quad R \approx \sqrt{\theta r^2 - \gamma}.$$

(b) *In this region the eigenvalues of the map are given by*

$$(4.12) \quad \lambda_1 \approx \sqrt{\theta}/\sqrt{1 - \gamma/(\theta r^2)}, \quad \lambda_2 = \sqrt{\theta}\sqrt{1 - \gamma/(\theta r^2)}.$$

(c) *The skewness measure is given by*

$$(4.13) \quad Q_s \approx \frac{1}{2} \left(\frac{1}{1 - \gamma/(\theta r^2)} + 1 - \gamma/(\theta r^2) \right).$$

Proof. As $f(R)$ is small if $R \gg a$, it follows from (4.7) that if $R \gg a$ then

$$R^2/2 + \gamma/2 \approx \theta r^2/2.$$

The result (4.11) then follows. To obtain (4.12) and (4.13) note that $\rho(R) \approx 1$ in this region and apply Lemma 4.1. \square

NOTE: We can generalise this result to n -dimensions in which case we have $R = (r^n \theta - \gamma)^{1/n}$, so spherical shells are mapped to spherical shells, but cuboids are distorted.

By applying Theorem 4.2 we can deduce the geometrical form of the mesh in this region. We note that whilst the relation (4.11) maps circles to circles, it does not map squares to squares. Indeed the image of a large square centred on the origin will have a leaf-like shape with the sides of the square mapped closer to the origin than the corners. As r and hence R increases, Q_s tends to one, and the mesh becomes asymptotically isotropic with again a uniform scaling factor of $\sqrt{\theta}$. As r decreases, the value of Q_s in (4.13) increases and the mesh becomes more anisotropic. To see this in more detail, assume that the computational mesh τ_c is composed of uniform small squares of side h aligned with the coordinate axes. A small square lying on a line through the origin parallel to the coordinate axes in the region $r > r_1$ ($R > a$) will be mapped in turn to a small rectangle of sides $\lambda_1 h$ and $\lambda_2 h$. In contrast, the squares on lines at an angle of $\pi/4$ or similar through the origin will be mapped into diamonds with interior diagonals of length $\sqrt{2}\lambda_1 h$ and $\sqrt{2}\lambda_2 h$. The smallest angle δ in such a diamond is given by $\delta = 2 \arctan(\lambda_1/\lambda_2)$.

To examine the role played by the boundaries we consider a map from a circle in a computational domain of radius r_* to one in a physical domain of radius R_* . This then determines the value of θ and in turn the level of anisotropy at the boundary.

LEMMA 4.3. (a) *If the boundary of a disc of radius r_* is mapped to one of radius R_* and $\alpha_2 \gg 1$ then*

$$(4.14) \quad \theta = (R_*^2 + \gamma)/r_*^2, \quad \lambda_2 = R_*/r_*, \quad \lambda_1 = (R_*^2 + \gamma)/(R_* r_*).$$

(b) The anisotropy $Q_{s,*}$ of the mesh at the boundary is given by

$$(4.15) \quad Q_{s,*} = \frac{1}{2} \left(1 + \gamma/R_*^2 + \frac{1}{1 + \gamma/R_*^2} \right).$$

(c) In the particular case of $r_* = R_*$, $\lambda_1 = \theta$, $\lambda_2 = 1$ and

$$(4.16) \quad Q_{s,*} = \frac{1}{2} \left(\theta + \frac{1}{\theta} \right).$$

Hence the skewness of the mesh close to the boundary is small provided that θ is close to unity.

Proof. These results follow immediately from (4.11) and Lemma 4.1. \square

4.2. Explicitly Calculated Meshes for Radially Symmetric Features.

Now consider a representative density function $\rho(R)$ having the properties of the function in section 4.1 which is simple enough to allow explicit calculation of the mesh. In particular we take

$$(4.17) \quad \rho(R) = 1 + f(R) \equiv 1 + \alpha_1 \operatorname{sech}^2(\alpha_2(R^2 - a^2)).$$

The parameter $\alpha_1 = \max(f(R))$ (assumed large) determines the density of the point concentration onto the feature. A measure of the width of the feature is $1/\alpha_2 a$ (assumed small) if $a > 0$ and $1/\sqrt{\alpha_2}$ if $a = 0$. It is immediate that

$$(4.18) \quad \gamma = \alpha_r = \alpha_1/\alpha_2 \quad \text{if } a = 0, \quad \text{and} \quad \gamma = 2\alpha_r \quad \text{if } a > 0.$$

Using the expression (4.7) it follows that

$$\int_0^R (1 + \alpha_1 \operatorname{sech}^2(\alpha_2((R')^2 - a^2))) R' dR' = \theta \frac{r^2}{2},$$

and integrating and rearranging both sides we obtain

$$(4.19) \quad R^2 + \alpha_r \tanh(\alpha_2(R^2 - a^2)) + \alpha_r \tanh(\alpha_2 a^2) = \theta r^2 =: F(R).$$

We will now analyse the solution for the cases of (i) singular (blow-up) solution corresponding to $a = 0$ and (ii) ring solutions corresponding to $a > 0$.

4.2.1. Meshes for Singular Solutions. When computing solutions with radially symmetric singularities arising over small length scales, such as those observed in the calculation of blow-up solutions [9], [13], we seek meshes which are uniform and isotropic both inside and away from the singular region, and which have a smooth transition between these regions. Such meshes are obtained by this method. To see this, note from (4.19) that for $a = 0$

$$(4.20) \quad R^2 + \alpha_r \tanh(\alpha_2 R^2) = \theta r^2.$$

The singular region, in which the mesh is concentrated, has radius of the order of $R_1 = 1/\sqrt{\alpha_2}$. For $R \ll R_1$ it follows from (4.20) that

$$(4.21) \quad R \approx r \sqrt{\theta/(1 + \alpha_1)}.$$

We observe that r and R are linearly related and hence, as required, the mesh is uniform and isotropic in this region. The corresponding region in the computational domain is then given by $r < r_1$ where

$$(4.22) \quad \sqrt{\theta}r_1 \approx \sqrt{(1 + \alpha_1)/\alpha_2}.$$

Note also that going from the computational to the physical domain we see a mesh compression factor of $\sqrt{\theta/(1 + \alpha_1)}$.

As R increases beyond $1/\sqrt{\alpha_2}$ then $\tanh(\alpha_2 R^2)$ rapidly tends towards unity, and the mesh evolves into the outer region, the form of which is given in Theorem 4.2. Using Lemma 4.1 we can explicitly calculate the eigenvalues of the transformation, and therefore quantify the level of skewness using the measure Q_s , in the regions close to the singularity and in the far field. Specifically,

$$\lambda_2 = R/r \approx \begin{cases} (\theta/(1 + \alpha_1))^{1/2}, & \text{for } R \ll R_1, \\ r^{-1}(\theta r^2 - \alpha_r)^{1/2}, & \text{for } R \gg R_1, \end{cases}$$

and $\lambda_1 = \theta/(\rho(R)\lambda_2)$. The skewness measure Q_s is then

$$(4.23) \quad Q_s \approx \begin{cases} \frac{1}{2} \left(\frac{(1+\alpha_1)}{\rho} + \frac{\rho}{(1+\alpha_1)} \right), & \text{for } R \ll R_1, \\ \frac{1}{2} \left(\frac{r^2\theta}{(r^2\theta - \alpha_r)} + \frac{(r^2\theta - \alpha_r)}{r^2\theta} \right), & \text{for } R \gg R_1. \end{cases}$$

In the singular region $\rho(R) \approx 1 + \alpha_1$, so $\lambda_1 \approx \lambda_2 \approx \sqrt{\theta/(1 + \alpha_1)}$, $Q_s \approx 1$, and the mesh is isotropic. If $R \gg R_1$ then Q_s approaches one as $R \rightarrow \infty$. Note the value of Q_s here is that given by (4.13) with $\gamma = \alpha_r$ and $a = R_1$. As R decreases towards R_1 the mesh becomes more anisotropic and Q_s , as determined implicitly from (4.20), takes a maximum value $Q_{s,max}$. This maximum value occurs near $R \approx 2/\sqrt{\alpha_2}$ for which

$$(4.24) \quad Q_{s,max} \approx \frac{1}{2} \left(\frac{4 + \alpha_1 \tanh(4)}{4 - \alpha_1(1 - \tanh(4))} + \frac{4 - \alpha_1(1 - \tanh(4))}{4 + \alpha_1 \tanh(4)} \right).$$

We now consider two examples of meshes for $r_* = R_* = 1/2$.

If $\alpha_1 = 10$, and $\alpha_2 = 200$ then from (4.14) we have $\theta = 1.2$ and from (4.16) $Q_{s,*} = 61/60$ at the boundary. Hence the mesh has skew elements at the boundary. The elements of maximum skewness are located just outside the blow-up region and from (4.24) $Q_{s,max} = 1.9$. The resulting mesh as an image of a 60×60 uniform mesh in the computational domain is plotted in Fig. 4.1 (Left), and the structure of the intermediate and outer regions is apparent. If $\alpha_1 = 50$, and $\alpha_2 = 100$, then $\theta = 3$ and $Q_{s,*} = 5/3$. At the boundary $\lambda_1/\lambda_2 = \theta = 3$, hence the mesh elements will be stretched in the radial direction by a factor of 3. In the singular region the elements are isotropic and the elements in the physical domain will be approximately $\sqrt{3/51} \approx 1/4$ the size of those in the computational domain. The maximum skewness $Q_{s,max} = 6.8$ and so the mesh elements will be stretched in the radial direction by a factor of 13. The mesh is shown in Fig. 4.1 (Right) and shows a much greater degree of skewness. Again we note that much greater skewness would arise than the example presented here for a larger value of θ . It is interesting to note these meshes have the same structure as those generated by the Monge-Ampère method to solve PDE's with blow-up solutions [9].

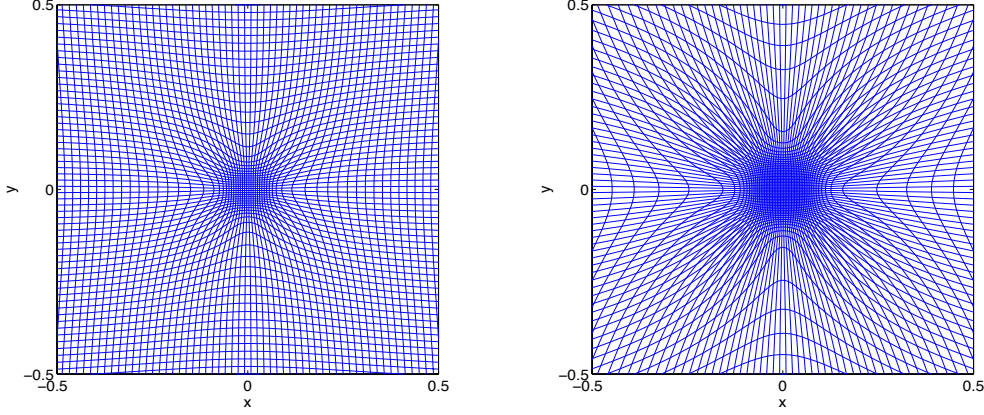


FIG. 4.1. The mesh generated from the image of a regular square mesh (60×60) under the action of a radially symmetric solution of the Monge-Ampère equation for $a = 0$ when $\alpha_1 = 10$, $\alpha_2 = 200$, $\theta = 1.2$ (Left) and when $\alpha_1 = 50$, $\alpha_2 = 100$, $\theta = 3$ showing greater skewness (Right). The leaf like structure of the mesh in the outer region is apparent in both examples.

4.2.2. Ring solution. We now consider the case of $a > 0$, $\alpha_1 \gg 1$, $\alpha_2 \gg 1$ so that $\rho \approx 1$ if $|R^2 - a^2| > \mathcal{O}(1/a_2^2)$ and $\rho \approx 1 + \alpha_1$ otherwise, which leads to mesh concentration along a ring. For $R \gg a$ the mesh is described by the outer solution considered earlier, with anisotropy at the boundary given by Lemma 4.3. Similarly, if $R \ll a$ then the mesh is described by the inner region and isotropic with a scale factor of $\sqrt{\theta}$. When $a > 0$ the function (4.19) can be approximated by

$$(4.25) \quad R \approx \begin{cases} \sqrt{r^2\theta}, & \text{for } r \ll r_1, \\ \sqrt{\frac{r^2\theta - \alpha_r + \alpha_1 a^2}{1 + \alpha_1}}, & \text{for } r_1 \ll r \ll r_2, \\ \sqrt{r^2\theta - 2\alpha_r}, & \text{for } r \geq r_2, \end{cases}$$

where the radii $r_1 = \sqrt{\theta^{-1}(a^2 - 1/\alpha_2)}$, and $r_2 = \sqrt{\theta^{-1}(a^2 + 1/\alpha_2 + 2\alpha_r)}$ are mapped to $R_1 = \sqrt{a^2 - 1/\alpha_2}$ and $R_2 = \sqrt{a^2 + 1/\alpha_2}$, respectively. Using (4.4) and (4.25)

$$(4.26) \quad \lambda_2 \approx \begin{cases} \theta^{1/2}, & \text{for } r \ll r_1, \\ ((r^2\theta - \alpha_r + \alpha_1 a^2)/(r^2(1 + \alpha_1)))^{1/2}, & \text{for } r_1 \ll r \ll r_2, \\ ((r^2\theta - 2\alpha_r)/r^2)^{1/2}, & \text{for } r \geq r_2. \end{cases}$$

$$\lambda_1 \approx \theta/(\rho\lambda_2).$$

Similarly, the level of anisotropy Q_s can be approximated by

$$(4.27) \quad Q_s := \begin{cases} \frac{1}{2} \left(\frac{1}{\rho} + \rho \right), & \text{for } r < r_1, \\ \frac{1}{2} \left(\frac{\theta r^2(1 + \alpha_1)}{\rho(r^2\theta - \alpha_r + \alpha_1 a^2)} + \frac{\rho(r^2\theta - \alpha_r + \alpha_1 a^2)}{\theta r^2(1 + \alpha_1)} \right), & \text{for } r_1 < r < r_2, \\ \frac{1}{2} \left(\frac{\theta r^2}{\rho(r^2\theta - 2\alpha_r)} + \frac{\rho(r^2\theta - 2\alpha_r)}{\theta r^2} \right), & \text{for } r > r_2. \end{cases}$$

Inside the ring with $R \ll a$, since $\rho \approx 1$, $\lambda_1 \approx \lambda_2 \approx \sqrt{\theta}$, so $Q_s \approx 1$ and the mesh is isotropic. On the ring near $R \approx a$, $\rho \approx 1 + \alpha_1$, and the degree of anisotropy depends

on the value $\alpha_1 a^2 - \alpha_r$. The larger this value the more anisotropic the mesh. As $a \rightarrow \sqrt{\alpha_r/(\theta - 1)}$ then $\lambda_1 \rightarrow \theta/\rho$, and $\lambda_2 \rightarrow 1$, hence $\lambda_1/\lambda_2 \rightarrow \theta/\rho$. Therefore for a large enough radius of curvature a the anisotropy approaches that of a linear feature, as expected. As the radius of curvature becomes smaller and $a \rightarrow \sqrt{1/\alpha_2}$, $\rho \rightarrow 1 + \alpha_1$, so $\lambda_1/\lambda_2 \rightarrow r^2\theta/(r^2\theta + \alpha_1 a^2 - \alpha_r) \rightarrow 1$, and the mesh becomes isotropic.

For example, if $a = 0.25$ and $r_* = R_* = 1/2$, then choosing $\alpha_1 = 10$ and $\alpha_2 = 200$ gives $\theta \approx 1.4$ and $Q_{s,*} = 1.05$. This results in fairly isotropic elements at the boundary. Inside the ring the mesh elements are isotropic and $Q_s = 1$ near the centre of the ring. Along the ring the elements are anisotropic, and $Q_s = 3.1$ at $R = 0.25$ which is the maximum value. The mesh is shown in Fig. 4.2.

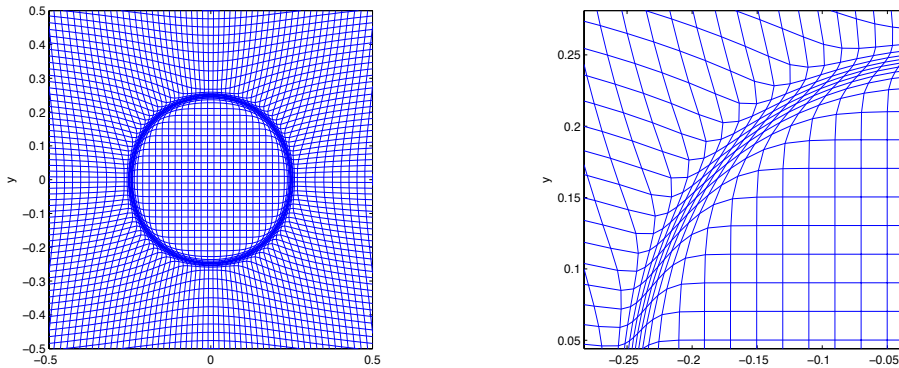


FIG. 4.2. A mesh generated from a radially symmetric solution of the Monge-Ampère equation when $\alpha_1 = 10$, $\alpha_2 = 200$, $\theta = 1.4$ and $a = 0.25$ (Left). An enlargement of the ring feature (Right).

If instead $\alpha_1 = 50$, and $\alpha_2 = 100$, then $\theta \approx 5$ and $Q_{s,*} = 2.6$ so that at the boundary the mesh elements are skew. Inside the ring the mesh elements are isotropic with a scale factor of $\sqrt{5}$. However, the maximum value of $Q_s \approx 5.1$ does not occur along the ring, as in the previous example, but just outside the ring where elements are stretched in the radial direction. This can be seen in the mesh plot in Fig. 4.3.

4.3. Solutions in domains without radial symmetry. The examples described in the previous section relate to problems in which we can exactly solve the Monge-Ampère equation in a disc, mapping the boundary of a disc to that of another disc. We now consider problems in more general domains. We note that in the outer region $R \rightarrow \sqrt{\theta} r$ as $r \rightarrow \infty$, so that in the limit square domains are mapped to square domains. For most such problems the exact solution of the Monge-Ampère equation is intractable and we must find the solution of this nonlinear elliptic PDE, together with its associated boundary conditions, numerically. This can either be done directly [17], [23], or by using a relaxation method [10], [6]. In this section we will consider, as before, the mesh determined for a radially symmetric feature using the density function (4.17), but now for unit square computational and physical domains centred at the origin. It is shown in [9] that the boundary mapping condition is equivalent to

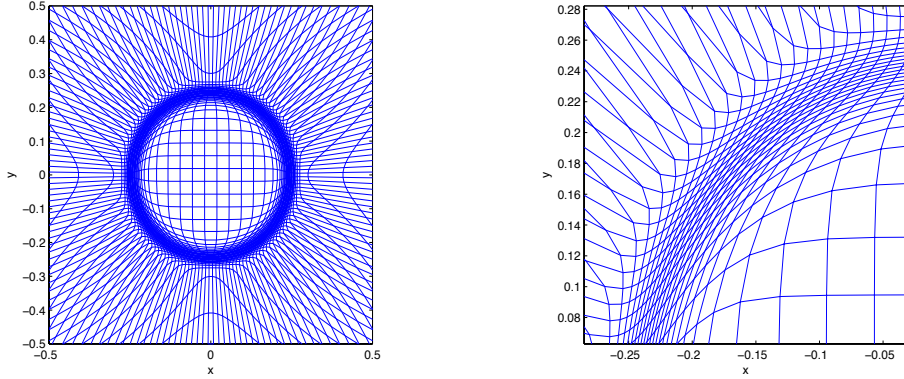


FIG. 4.3. A mesh generated from radially symmetric solution of the Monge-Ampère equation when $\alpha_1 = 50$, $\alpha_2 = 100$, $\theta = 5$ and $a = 0.25$ (Left). An enlargement of the ring feature (Right).

imposing Neumann boundary conditions on the solution to the Monge-Ampère equation. This calculation will allow us to assess the impact of boundary conditions on the alignment of the mesh. In Fig. 4.4 (Left) we see the mesh generated using a numerical solution of the Monge-Ampère equation with Neumann boundary conditions when $\Omega_C = \Omega_P = S \equiv [-0.5, 0.5]^2$, $a = 0.25$, $\alpha_1 = 10$, and $\alpha_2 = 200$. The skewness measure \hat{Q}_s for this mesh, which is computed numerically using (2.2), is shown in Fig. 4.4 (Right).

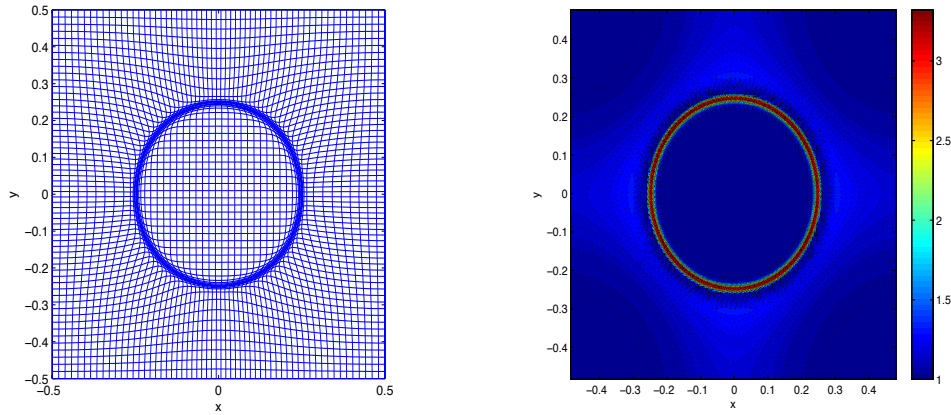


FIG. 4.4. The (60×60) mesh computed numerically for the density function (4.17) with $\alpha_1 = 10$, $\alpha_2 = 200$, and $a = 0.25$, with boundary $\Omega_C = \Omega_P = [-0.5, 0.5]^2$ (Left). The numerically computed skewness measure \hat{Q}_s (Right).

A comparison of \hat{Q}_s with the skewness measure Q_s for the radially symmetric solution in (4.27) reveals that the effects of the square geometry on the skewness of the mesh are negligible. The skewness is almost radially symmetric for the mesh generated in the unit square, although the skewness of elements that lie along the axis $y = 0$ and

those that lie along $y = x$ differ slightly. The values of Q_s at $R = 0$, $R = a$, and $R = 1/2$, are 1, 3.1, and 1.05 respectively. The values of \hat{Q}_s at $(0, 0)$, $(a, 0)$, $(1/2, 0)$, are 1, 3.1, 1.2, where as at $(0, 0)$, $(a/\sqrt{2}, a/\sqrt{2})$, $(1/2, 1/2)$ they are 1, 3.3, and 1. In Fig. 4.5 (Left) we see the mesh generated numerically when $\Omega_C = \Omega_P = S$, $a = 0$, $\alpha_1 = 50$, $\alpha_2 = 100$, and the numerically computed skewness measure \hat{Q}_s is shown in Fig. 4.5 (Right). As in the previous section, this mesh is much more skew outside the blow-up region.

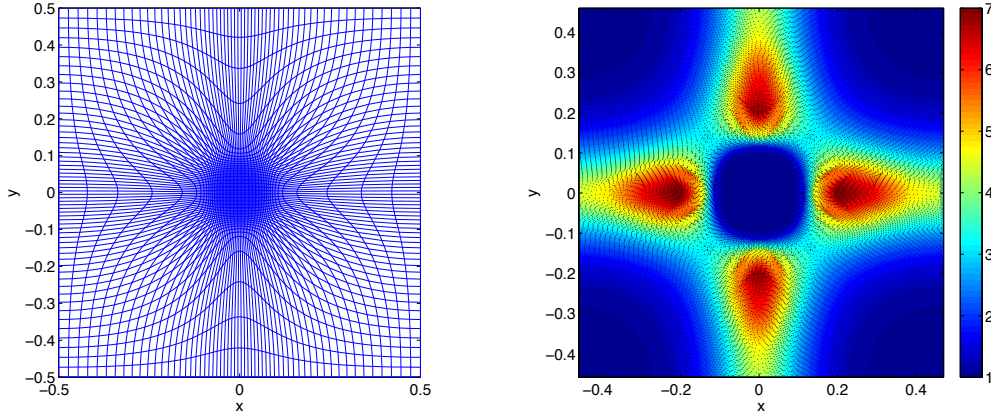


FIG. 4.5. Numerically computed (60×60) mesh in S for the density function (4.17), with $\alpha_1 = 50$, $\alpha_2 = 100$, and $a = 0$ (Left). The numerically computed skewness measure \hat{Q}_s (Right).

However, in this case the skewness is clearly not radially symmetric, and we see significant effects of the square geometry as we approach the boundary. Elements that lie along the axis $y = 0$ and those that lie along $y = x$ do not have exactly the same measures of skewness. Recall that for the radially symmetric solution the values of Q_s at $R = 0$, and $R = 1/2$ are 1 and $5/3$, and the maximum value of Q_s is 6.5, and occurs behind the region of blow-up. For the numerically computed mesh, along the axis $y = 0$, the value of \hat{Q}_s at $(0, 0)$, and $(1/2, 0)$, is 1 and 4.4. Therefore, at the boundary, the skewness is more than double that of the mesh generated from the radially symmetric solution. The maximum skewness $\hat{Q}_s = 7.1$ is also slightly greater than in the radially symmetric case, although we note that it occurs at the exact same point just behind the region of blow-up. Along the axis $y = x$ the elements in the numerically computed mesh are not as stretched in the radial direction as in the radially symmetric case. The maximum value of \hat{Q}_s is 3 and occurs just behind the singular region. At the boundary the value is only 1.2. We also obtain similar results for the ring case in the region outside the ring. In particular, when θ exceeds 1 the effects of the geometry become more significant, and the larger the value of θ the more skew the elements are near the boundary. If θ is much larger than 1 the elements of greatest skewness occur just outside of the ring and not at the boundary. However, inside the ring and more importantly along the ring the values of \hat{Q}_s and Q_s do not differ significantly, hence the geometry of the mesh has very little impact on the degree of anisotropy in these regions.

5. Examples of mesh alignment to more general features. The exact calculations presented in the previous two sections have looked at features with simple geometries, while in practical calculations the mesh can have a much more complex geometry. In this section we will consider two examples of such, and consider the geometry of the meshes computed numerically by solving Monge-Ampère for an appropriate density function ρ . The first example has a prescribed (scalar) density ρ and the second has ρ given in terms of the evolving solution of a PDE which is known to develop complex features on small length scales. In both cases the features have certain sections which are similar to the linear features of Section 3 and we shall see similar alignment of the meshes close to them. Similarly, they also have features with curvature, in which case the results of Section 4 can be used to predict the (local) geometry of the mesh.

5.1. Example 1: A prescribed monitor function. Consider the density function

$$(5.1) \quad \rho = 1 + \alpha_1 \operatorname{sech}^2(\alpha_2 \Psi), \quad \Psi = y - 0.2 \sin(2\pi(x + 0.5)),$$

which describes a sinusoidal feature of thin cross-section. We will consider both the local and the global geometry of the mesh that results when solving the Monge-Ampère equation in a square domain with Neumann boundary conditions in the y -direction and periodic boundary conditions in the x -direction. Such boundary conditions are appropriate for the solution of periodic waves such as (5.1), and arise naturally in many meteorological applications [6]. The numerically computed mesh for this density function, with $\alpha_1 = 20$, $\alpha_2 = 100$, and $\theta = 1.2$, using the boundary conditions above, is shown in Fig. 5.1 (Left). The degree of anisotropy in the mesh can be seen more clearly by plotting the circumscribed ellipses of a number of mesh elements, as shown in Fig. 5.1 (Right). The blue circumscribed ellipses have principal axes (red-arrows) in the direction of the eigenvectors of the Jacobian matrix \mathbf{J} , constructed from the numerically computed mesh, and the semi-lengths of these axes correspond to the associated eigenvalues. It would appear that the eigenvectors of \mathbf{J} are orthogonal and tangential to the curve defined as the set for which $\Psi(\mathbf{x}) = 0$. Given that ρ is constant along this curve, it is reasonable to assume there will be no movement of the mesh in that direction, so the eigenvalue corresponding to the tangential eigenvector is estimated to be 1, implying the eigenvalue in the orthogonal direction is θ/ρ . The symmetric matrix $\tilde{\mathbf{J}}$ corresponds to a metric tensor $\tilde{\mathbf{M}}$ with eigenvalues and eigenvectors given by

$$\tilde{\mu}_1 = \rho^2/\theta, \quad \tilde{\mu}_2 = \theta, \quad \text{and} \quad \tilde{\mathbf{e}}_1 = \nabla\Psi/\|\nabla\Psi\|.$$

Notice that these eigenvalues correspond to those derived in Section 3 for a single linear feature where $\Psi = \mathbf{x} \cdot \mathbf{e}_1 - c$. We now compare how well $\tilde{\mathbf{J}}$ approximates \mathbf{J} . In the regions along the sinusoidal feature that are close to linear this is a very good approximation, and we observe good alignment to the feature (see Fig. 5.2 (Right)). Furthermore, we also see good agreement away from the feature where the mesh is close to being uniform. However, in regions where the feature has more curvature, the mesh elements are less anisotropic (see Fig. 5.1). Interestingly, the eigenvalues of $\tilde{\mathbf{M}}$ are not a good approximation in this region but the eigenvectors are. In fact we observe that the eigenvectors are approximately tangential and orthogonal to the shock along the entire curve $\Psi(\mathbf{x}) = 0$. For these regions of maximum curvature of the feature, we instead approximate the eigenvalues of the metric tensor by using

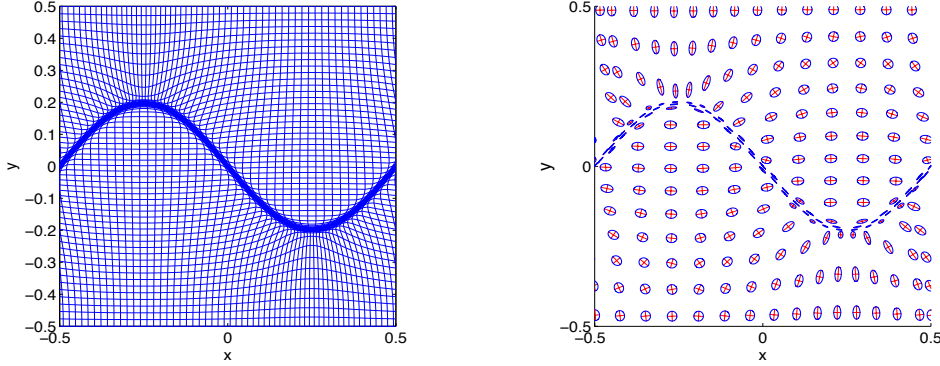


FIG. 5.1. The numerically computed mesh (60×60) generated for the density function (5.1) with $\alpha_1 = 20$, $\alpha_2 = 100$, $\theta = 1.4$, with Neumann boundary conditions in the y -direction and periodic in the x -direction (Left). An eigenplot for the Jacobian matrix \mathbf{J} , constructed from the numerically computed mesh. Note that the eigenvectors are in the direction of the principal axes (red arrows). The semi-lengths of these axes correspond to the associated eigenvalues and the circumscribed ellipses are shown in blue (Right).

the radially symmetric solution of the Monge-Ampère equation studied in Section 4. Specifically we assume that in the region $x_1 < x < x_2$, & $y < y_1$, ρ can be well approximated as part of a radially symmetric feature with density function

$$\hat{\rho}_1 = 1 + \alpha_1 \operatorname{sech}^2(\alpha_2 \Psi_1), \quad \Psi_1 = \hat{R}_1^2 - a^2,$$

and similarly in the region $-x_2 < x < -x_1$, & $y > y_1$, by

$$\hat{\rho} = 1 + \alpha_1 \operatorname{sech}^2(\alpha_2 \Psi_2), \quad \Psi_2 = \hat{R}_2^2 - a^2,$$

where $\hat{R}_1 = \sqrt{(x + 0.25)^2 + (y + a - 0.2)^2}$ and $\hat{R}_2 = \sqrt{(x - 0.25)^2 + (y - a + 0.2)^2}$. The radius a of the radially symmetric feature is estimated by taking the average radius of curvature along a section of Ψ . We can then approximate the eigenvalues tangential and orthogonal to Ψ as in Section 1.1.4. Note that we calculate θ using the integral of the original density function ρ over the domain, rather than $\hat{\rho}$. In Fig. 5.2 (Left) the Jacobian matrix \mathbf{J} , obtained from the numerical solution of Monge-Ampère with doubly periodic boundary conditions, is compared to the Jacobian matrix $\hat{\mathbf{J}}$ in regions of high curvature. The matrix $\hat{\mathbf{J}}$ has the same eigenvalues as \mathbf{J} , i.e. they are assumed to be orthogonal and tangential to $\Psi(\mathbf{x}) = 0$, but the eigenvalues are those derived in the radially symmetric solution in Section 4. As before, red arrows are used to represent the direction of the eigenvectors of \mathbf{J} , which are the principal axes of the circumscribed ellipses depicted in blue (Right). The ratio of their respective lengths have the same magnitude as the ratio of the associated eigenvalues of \mathbf{J} . The directions of the eigenvectors of $\hat{\mathbf{J}}$ and $\hat{\mathbf{J}}$ are depicted using black arrows, and the ratio of their respective lengths have the same magnitude as the ratio of the associated eigenvalues.

If we instead choose $\alpha_1 = 50$, $\alpha_2 = 50$, such that $\theta = 3$, then \mathbf{J} is well approximated by $\tilde{\mathbf{J}}$ and $\hat{\mathbf{J}}$ in the linear regions and regions of high curvature, respectively, along Ψ . The mesh and \mathbf{J} are shown in Fig. 5.3.

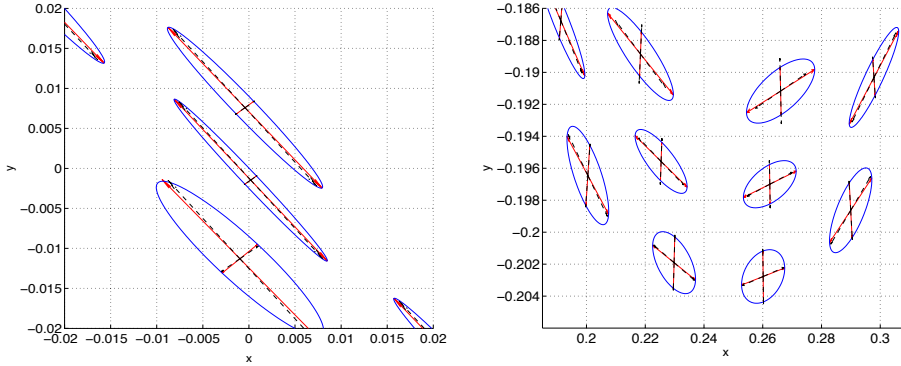


FIG. 5.2. The eigenplots for the numerically computed Jacobian matrix \mathbf{J} are compared to $\tilde{\mathbf{J}}$ in a region where Ψ is approximately linear (Left), and to $\tilde{\mathbf{J}}$ in a region of high curvature (Right). The length of the semi-axes (red arrows) of the blue circumscribed ellipses correspond to the eigenvalues of \mathbf{J} , and the direction of the semi-axes correspond to the associated eigenvectors. The eigenvectors of $\tilde{\mathbf{J}}$ and $\tilde{\mathbf{J}}$ (black arrows) are assumed to be orthogonal and tangential to the feature. The eigenvalues of $\tilde{\mathbf{J}}$ correspond to those derived for a linear feature in Section 3 and those of $\tilde{\mathbf{J}}$ a radially symmetric feature derived in Section 4.

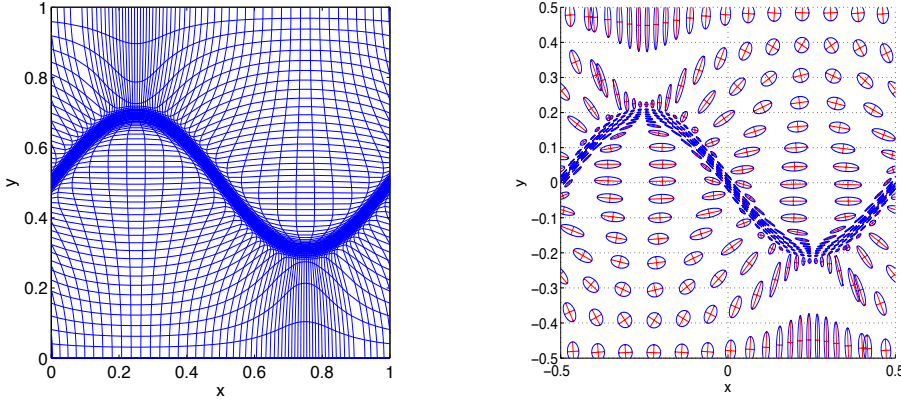


FIG. 5.3. The computed mesh for the density function (5.1) with $\alpha_1 = 50$, $\alpha_2 = 50$, $\theta = 3$, and $a = 0.25$ with Neumann boundary conditions in the y -direction and periodic in the x -direction (Left). An eigenplot for \mathbf{J} : the length of the semi-axes (red arrows) of the blue circumscribed ellipses correspond to the eigenvalues, and the direction of the semi-axes correspond to the associated eigenvectors (Right).

We note that when θ is greater than 1 the approximation underestimates the level of skewness close to the top and bottom boundary. Furthermore, due to the Neumann boundary condition the eigenvectors are not aligned tangential and orthogonal to Ψ at the boundary.

5.2. Example 2: Time Dependant Solution of a nonlinear PDE. We now consider the adaptive numerical solution of the Buckley Leverett equation

$$(5.2) \quad u_t + f(u)_x + g(u)_y = \dot{x}u_x + \dot{y}u_y + \mu\Delta u,$$

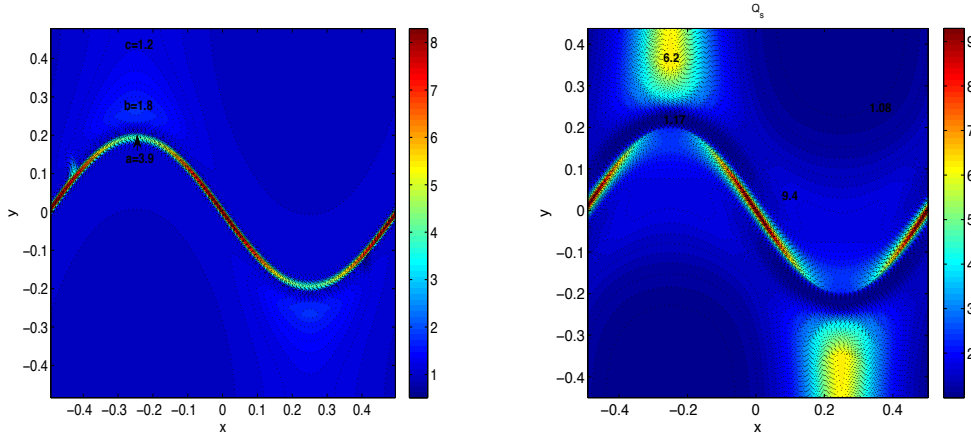


FIG. 5.4. The value of \hat{Q}_s for the numerically computed mesh with density function (5.1) and Neumann boundary conditions in the y -direction and periodic in the x -direction when $\alpha_1 = 20$, $\alpha_2 = 100$, $\theta = 1.4$, and $a = 0.25$ (Left), and $\alpha_1 = 50$, $\alpha_2 = 50$, $\theta = 3$ (Right).

with $\mu = 1.1 \times 10^{-3}$. The flux functions are

$$f(u) = \frac{u^2}{3(u^2 + (1-u)^2)}, \quad g(u) = \frac{1}{3}f(u)(1 - 5(1-u)^2),$$

and the initial data is

$$u(x, y, 0) = \begin{cases} 1, & (x - 0.5)^2 + (y - 0.5)^2 < \frac{1}{18} \\ 0 & \text{otherwise.} \end{cases}$$

This model includes gravitational effects in the y -direction. The exact solution is unknown, although numerical results [35], [53], indicate a thin and curved reaction front forms which is our main motivation for studying it here. The solution to (5.2) is computed on the domain $[0, 1]^2$ up to time $t=0.4$. To compute this solution the mesh is continuously updated by solving a parabolised version of the Monge-Ampère equation as described in [10]. The coupled system of the Buckley Leverett equation and the mesh equation is then solved in the computational domain using an alternate procedure with a composite centred finite difference scheme used to discretise both systems. For this calculation we use an arc-length based density function given by

$$\rho = \sqrt{1 + |\nabla u|^2}.$$

The solution and mesh at $t = 0.4$ are shown in Fig. 5.5. In Fig. 5.6 a plot of the eigenvectors of the Jacobian matrix for a number of mesh elements reveals that in the region where the density function is large the eigenvectors are tangential and orthogonal to the feature. Furthermore the eigenvectors remain aligned to this feature as the solution and mesh evolves in time. The magnitude of the eigenvectors corresponds to their associated eigenvalues. A comparison of the eigenvalues with those associated with a linear feature shows that this is an excellent approximation along regions of the curve that are close to linear (see Fig. 5.7 (Left)). Moreover, in regions of high curvature a radially symmetric solution gives a much better approximation. The density function in a region of high curvature is considered to be part of a radially

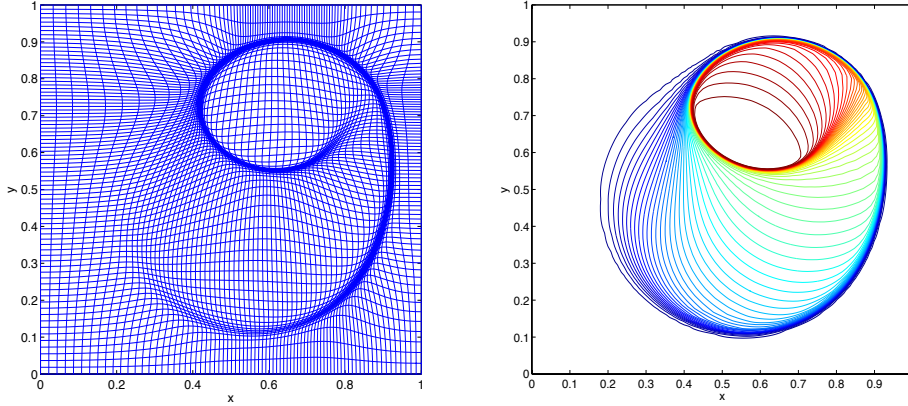


FIG. 5.5. The numerically computed mesh (80×80) with Neumann boundary conditions for the Buckley Leverett problem at $t=0.4$ (Left), and the solution (Right).

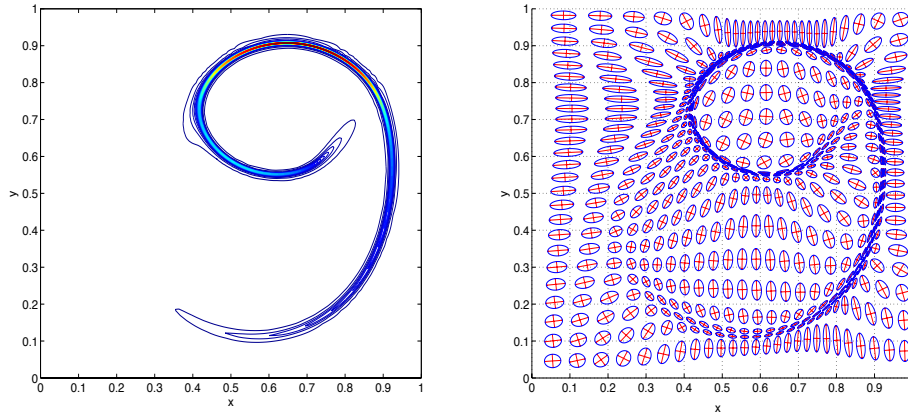


FIG. 5.6. The density function ρ at $t = 0.44$ for the Buckley Leverett problem (Left). The eigenvectors of the Jacobian matrix for a sample of mesh elements in the corresponding mesh are represented by red arrows and their circumscribed ellipses are shown in blue (Right).

symmetric feature with density function $\tilde{\rho}$

$$\tilde{\rho} = 1 + \alpha_1 \text{sech}^2(\alpha_2 \Psi_2), \quad \Psi_2 = \tilde{R}^2 - a^2,$$

where $\tilde{R} = \sqrt{(x - 0.62)^2 + (y - .72)^2}$, $a = 0.2$, $\alpha_1 = 70$, and $\alpha_2 = 500$. A comparison of the eigenvalues of the Jacobian with those associated with the density function $\tilde{\rho}$, which are computed using the radially symmetric solution, are shown in a region of high curvature in Fig. 5.7 (Right).

6. Conclusions. We have shown that a mesh redistribution method that is based on equidistributing a scalar density function via solving the Monge-Ampère equation has the capability of producing naturally anisotropic meshes in regions of rapid change in the solution structure. Furthermore, we have rigorously shown this

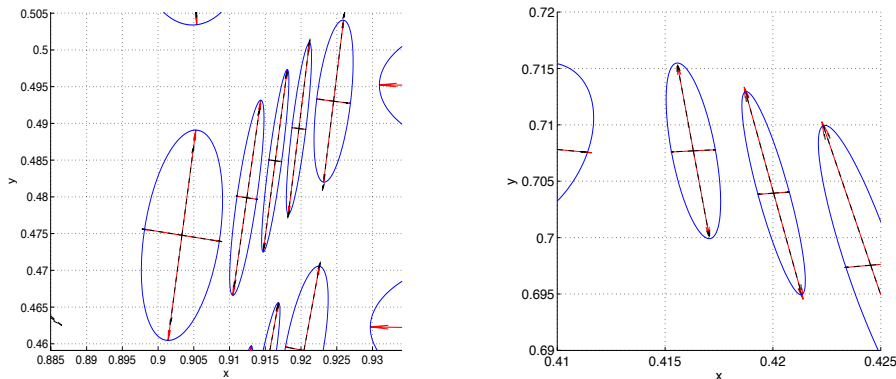


FIG. 5.7. A comparison of the eigenvalues of the Jacobian matrix (red arrows) with those corresponding to the linear solution derived in Section 3 (black arrows) in a region of low curvature (Left), and those corresponding to the radially symmetric solution derived in Section 4 in a region of high curvature (Right).

for model problems comprising orthogonal linear features and radially symmetric features by deriving the exact metric tensor to which these meshes align. We have also demonstrated that the results for these linear and radially symmetric cases can be used to approximate alignment for more complicated flow structures that arise in the solution of a non-linear PDE. The metric tensor has a very similar form to those traditionally used in variational methods, and given that determination of the mesh for such a tensor can be a difficult task, the computation using the Monge-Ampère approach would be an attractive alternative if an optimal or near optimal mesh is automatically obtained. We have seen that the Monge-Ampère metric tensor is very similar to the metric tensor that minimizes interpolation error. Both this and the preliminary computational results in Section 3.3 suggest that the latter mesh is indeed nearly optimal, and a closer investigation of this is currently underway.

Acknowledgments. The authors are grateful to Phil Browne (University of Reading), Mike Cullen (UK Met Office), Weizhang Huang (University of Kansas), and J F Williams (Simon Fraser University), for many useful suggestions and encouragement, and to the referees for their constructive comments. The research of the second and third author is partially supported by NSERC Grant A8781.

REFERENCES

- [1] E.F.D. AZEVEDO AND R.B. SIMPSON, *On optimal triangular meshes for minimizing the gradient error*, Numer. Math., **59**, (1991), 321–348.
- [2] M. J. BAINES, *Least squares and approximate equidistribution in multidimensions*, Numer. Meth. P. D. E., **15**, (1999), 605–615.
- [3] H. BOROUCAKI, P. L. GEORGE, F. HECHT, P. LAUG, AND E. SALTEL, *Delaunay mesh generation governed by metric specifications. I. Algorithms*, Finite Elem. Anal. Des., **25**, (1997), 61–83.
- [4] Y. BRENIER, *Polar factorization and monotone rearrangement of vector-valued functions*, Communications in Pure and Applied mathematics, **44** (1991), 375–417.
- [5] P.A. BROWNE, C.J. BUDD, C. PICCOLO AND M. CULLEN, *Fast three dimensional r-adaptive mesh redistribution*, (2013), submitted, <http://people.bath.ac.uk/mascjb/Papers09/paperdraft.pdf>

- [6] C.J. BUDD, M.J.P. CULLEN, E.J. WALSH, *Monge-Ampère based moving mesh methods for numerical weather prediction, with applications to the Eady problem*, J. Comp. Phys., **236**, (2013), 247-270.
- [7] C. J. BUDD, W. Z. HUANG, AND R. D. RUSSELL, *Moving mesh methods for problems with blow-up*, SIAM J. Sci. Comput., **17**,(1996), 305–327.
- [8] C. J. BUDD, W. Z. HUANG, AND R. D. RUSSELL, *Adaptivity with moving grids*, Acta Numerica, **18**,(2009), 111–241.
- [9] C. J. BUDD AND J. F. WILLIAMS, *Parabolic Monge-Ampère methods for blow-up problems in several spatial dimensions*, J. of Physics A, **39**, (2006) 5425–5444.
- [10] C. J. BUDD AND J. F. WILLIAMS, *Moving mesh generation using the parabolic Monge-Ampère equation*, SIAM J. Sci. Comput., **31** (2009), 3438–3465
- [11] L. CAFFARELLI, *Interior $W^{2,p}$ estimates for solutions of the Monge-Ampère equation*, Annals of Mathematics, **131** (1990), 135–150.
- [12] W. CAO, *On the error of linear interpolation and the orientation, aspect ratio, and internal angles of a triangle*, SIAM J. Numer. Anal., **43**, (2005), 19–40.
- [13] H. D. CENICEROS AND T. Y. HOU, *An efficient dynamically adaptive mesh for potentially singular solutions*, J. Comp. Phys., **172**, (2001), 609–639.
- [14] L. CHACON, G. DELZANNO, AND J. FIN, *Robust, multidimensional mesh-motion based on Monge-Kantorovich equidistribution*, J. Comp. Phys., **230.1**, (2011), 87–103.
- [15] J. F. COSSETTE, AND P. K. SMOLARKIEWICZ, *A Monge-Ampère enhancement for semi-Lagrangian methods*. Computers & Fluids, **46(1)**, (2011), 180-185.
- [16] J. F. COSSETTE, P. K. SMOLARKIEWICZ, AND P. CHARBONNEAU, *The Monge-Ampère trajectory correction for semi-Lagrangian schemes*. J. Comp. Phys., **274**, (2014), 208-229.
- [17] G. DELZANNO, L. CHACÓN, J. FINN, Y. CHUNG AND G. LAPENTA, *An optimal robust equidistribution method for two-dimensional grid adaptation based on Monge-Kantorovich optimization*, J. Comp. Phys., **227(23)**, (2008), 9841 – 9864.
- [18] A. S. DVINSKY, *Adaptive grid generation from harmonic maps on Riemannian manifolds*, J. Comp. Phys., **95**, (1991), 450–476.
- [19] L. FORMAGGIA, S. MICHELETTI, AND S. PEROTTO, *Anisotropic mesh adaptation in computational fluid dynamics: Application to the advection-diffusion-reaction and the Stokes problems*, Appl. Numer. Math., **51(4)**, (2004), 511–533.
- [20] L. FORMAGGIA AND S. PEROTTO, *New anisotropic a priori error estimates*, Numer. Math., **89**, (2001), 641–667.
- [21] M. FORTIN, M-G. VALLET, J. DOMPIERRE, Y. BOURGAULT, AND W.G. HABASHI, *Anisotropic mesh adaptation: Theory, validation and applications*, ECCOMAS computational fluid dynamics conference, (1996), 174–180.
- [22] P.J. FREY, AND F. ALAUZET, *Anisotropic mesh adaptation for CFD computations*, Comput. Methods Appl. Mech. Eng., **194(48)**, (2005), 5068–5082.
- [23] B. D. FROESE. *A numerical method for the elliptic Monge-Ampère equation with transport boundary conditions*. SIAM J. Sci. Comput., **34(3)**, (2012), A1432-A1459.
- [24] J-D. BENAMOU, B.D. FROESE, AND A.M. OBERMAN. *Numerical Solution of the Optimal Transportation Problem using the Monge-Ampère Equation*, MATH NA 23RD AUGUST 2012
- [25] P.L. GEORGE, F. HECHT, AND M.G. VALLET, *Creation of internal points in Voronois type method. Control and adaptation*, ADV. ENG. SOFTWARE, **13(5-6)**, (1991), 303–312.
- [26] W. G. HABASHI, J. DOMPIERRE, Y. BOURGAULT, D. AIT-AL-YAHIA, M. FORTIN, AND M. VALLET, *Anisotropic mesh adaptation: Towards user-independent, mesh-independent and solver-independent CFD. I. General principles*. INTERNAT. J. NUMER. METHODS FLUIDS, **32**, (2000), 725–744.
- [27] F. HECHT, *BAMG: bidimensional anisotropic mesh generator*, AVAILABLE FROM [HTTP://WWW-ROCQ.INRIA.FR/GAMMA/CDROM/WWW/BAMG/ENG.HTM](http://www-rocq.inria.fr/gamma/cdrom/www/bamg/eng.htm), INRIA- ROCQUENCOURT, FRANCE, (1998).
- [28] W. HUANG, *Practical aspects of formulation and solution of moving mesh partial differential equations*, J. COMP. PHYS., **171**, (2001), 753–775.
- [29] W. HUANG, *Metric tensors for anisotropic mesh generation*, J. COMP. PHYS., **204(2)**, (2005), 633–665.
- [30] W. HUANG, *Measuring Mesh Qualities and Application to Variational Mesh Adaptation*, SIAM J. SCI. COMPUT., **26**, (2005), 1643–1666.
- [31] W. HUANG, L. KAMENSKI, AND J. LANG, *A new anisotropic mesh adaptation method based upon hierarchical a posteriori error estimates*, J. COMP. PHYS. **229**, (2010), 2179–2198.
- [32] W. HUANG AND R. D. RUSSELL, *Adaptive Moving Mesh Methods*, SPRINGER, (2011).
- [33] W. HUANG, L. ZHENG AND X. ZHAN, *Adaptive moving mesh methods for simulating one dimensional groundwater problems with sharp moving fronts*, INTERNATIONAL JOURNAL FOR

- NUMERICAL METHODS IN ENGINEERING, **54.11**, (2002), 1579–1603.
- [34] J.M. HYMAN, L. SHENG, AND L. R. PETZOLD, *An adaptive moving mesh method with static rezoning for partial differential equations*, COMPUTERS AND MATHEMATICS WITH APPLICATIONS, **46.10**, (2003), 1511–1524.
- [35] K. H. KARLSEN, K. BRUSDAL, H. K. DAHLE, S. EVJE AND K.A. LIE, *The corrected operator splitting approach applied to a nonlinear advection-diffusion problem*, COMPUT. METHODS APPL. MECH. ENG., **167**, (1998), 239.
- [36] P. M. KNUPP, *Jacobian-weighted elliptic grid generation*, SIAM J. SCI. COMPUT., **17**, (1996), 1475–1490.
- [37] P. M. KNUPP, *Algebraic mesh quality metrics*, SIAM J. SCI. COMPUT., **23.1**, (2001), 193–218.
- [38] C. KHÜNLEIN, P.K. SMOLARKIEWICZ, AND A. DÖRNBRACK, *Modelling atmospheric flows with adaptive moving meshes*, J. COMP. PHYS., **231(7)**, (2012), 2741–2763.
- [39] W. KWOK AND Z. CHEN, *A Simple and Effective Mesh Quality Metric for Hexahedral and Wedge Elements*, PROC. 9TH INTERNATIONAL MESHING ROUNDTABLE, SANDIA NATIONAL LABORATORIES, (2000), 325–333.
- [40] X. LI AND W. HUANG, *An anisotropic mesh adaptation method for the finite element solution of heterogeneous anisotropic diffusion problems*, J. COMP. PHYS., **229**, (2010), 8072–8094.
- [41] X. LI, M.S. SHEPHARD, AND M.W. BEAL, *3D anisotropic mesh adaptation by mesh modification*, COMPUT. METHODS APPL. MECH. ENG., **194(48-49)**, (2005), 4915–4950.
- [42] G. LOEPER, AND F. RAPETTI, *Numerical solution of the Monge-Ampère equation by a Newton’s algorithm*, COMPTES RENDUS MATHEMATIQUE, **340.4**, (2005), 319–324.
- [43] A. LOSELLE, A. DERVIEUX, AND F. ALAUZET, *Fully anisotropic goal-oriented mesh adaptation for 3D steady Euler equations*, J. COMP. PHYS., **229**, (2010), 2866–2897.
- [44] F. MERLE, P. RAPHAEL, AND J. SZEFTTEL, *On collapsing ring blow-up solutions to the mass supercritical nonlinear Schrödinger equation*, DUKE MATHEMATICAL JOURNAL, **163(2)**, (2014), 369–431.
- [45] M. PICASSO, *An anisotropic error indicator based on Zienkiewicz-Zhu error estimator: Application to elliptic and parabolic problems*, SIAM J. SCI. COMPUT., **24(4)**, (2003), 1328–1355.
- [46] C. PICCOLO AND M. CULLEN, *A new implementation of the adaptive mesh transform in the Met Office 3D-Var System*, QUARTERLY JOURNAL OF THE ROYAL METEOROLOGICAL SOCIETY, **138**, (2012), 1560–1570.
- [47] R. B. SIMPSON, *Anisotropic mesh transformations and optimal error control*, APPL. NUMER. MATH., **14**, (1994), 183–198.
- [48] S. STEINBERG AND P. J. ROACHE, *Variational grid generation*, NUMER. METH. P. D. E., **2**, (1986), 71–96.
- [49] J. M. STOCKIE, J. A. MACKENZIE, AND R. D. RUSSELL, *A moving mesh method for one-dimensional hyperbolic conservation laws*, SIAM J. SCI. COMPUT., **22** (2000), 1791–1813.
- [50] M. SULMAN, J. F. WILLIAMS, AND R. D. RUSSELL, J. COMP. PHYS., (2011), **230(9)**, 3302–3330.
- [51] T. TANG, *Moving mesh methods for computational fluid dynamics*, CONTEMPORARY MATHEMATICS, **383**, (2005), 141–173.
- [52] H. TANG AND T. TANG, *Adaptive mesh methods for one- and two- dimensional hyperbolic conservation laws*, SIAM J. NUMER. ANAL., **41**, (2003), 487–515.
- [53] Z. ZHANG, AND T. TANG, *An adaptive mesh redistribution algorithm for convection-dominated problems*, COMMUNICATIONS ON PURE AND APPLIED ANALYSIS, **1.3**, (2002), 341–357.
- [54] R. VICHNEVETSKY, *Wave propagation and reflection in irregular grids for hyperbolic equations*, APPL. NUMER. MATH, **3**, (1987), 133–166.
- [55] R. VICHNEVETSKY, L.H. TURNER, *Spurious scattering from discontinuously stretching grids in computational fluid dynamics*. APPL. NUMER. MATH, **8(3)**, (1991), 289–299.
- [56] A. WINSLOW, *Numerical solution of the quasilinear poisson equation in a nonuniform triangle mesh*, J. COMP. PHYS., **1**, (1966), 149–172.