



Citation for published version:

Daniels, J, *Psychological wellbeing of Frontline Doctors: infographic*, 2021, Digital or Visual Products.

Publication date:
2021

Document Version
Other version

[Link to publication](#)

University of Bath

Alternative formats

If you require this document in an alternative format, please contact:
openaccess@bath.ac.uk

General rights

Copyright and moral rights for the publications made accessible in the public portal are retained by the authors and/or other copyright owners and it is a condition of accessing publications that users recognise and abide by the legal requirements associated with these rights.

Take down policy

If you believe that this document breaches copyright please contact us providing details, and we will remove access to the work immediately and investigate your claim.

MENTAL HEALTH STARTS WITH MEETING BASIC NEEDS.

Some of the people most affected by the COVID-19 pandemic were frontline doctors.

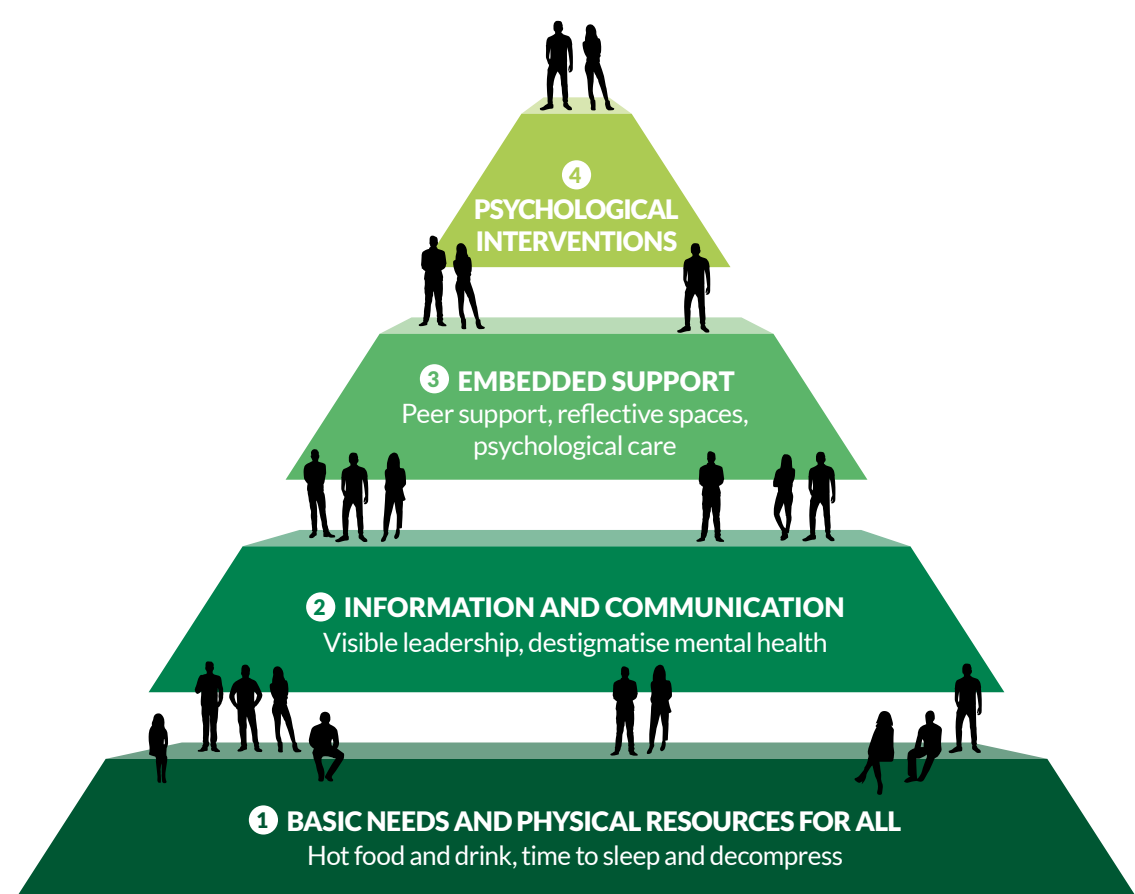
After two exhausting pandemic waves, no doctor can operate well when tired, hungry and concerned about their own and their family's physical and emotional safety. Doctors need time to sleep, decompress and recharge, safe spaces to talk.

The [CoCCo study](#) model of wellbeing and psychological care illustrates the importance of meeting basic needs for all, and specialist support for the few; progressing through stages as need arises.

Psychological care needs to be part of where you work.

Use this model as a template to shape a coherent pathway of support for those on the frontline, asking these questions:

- What are we providing at each stage?
- How can we help guide someone through these stages as they need more support?
- Where are our gaps?



COVID-19 shone a spotlight on problems in the NHS that existed before the pandemic. It's time for culture change: shared responsibility for our own and each other's wellbeing, destigmatising mental health and role modelling of leadership in compassionate care are pivotal to the future wellbeing of our workforce. Mental health affects everyone, we must do better at providing psychological care.