



*Citation for published version:*

Gill, HS, Mellon, S, Pegg, E, Ostlere, S, Pandit, H & Murray, D 2012, 'The role of imaging in follow-up of newly introduced implants', *Orthopaedics and Trauma*, vol. 26, no. 4, pp. 237-241.  
<https://doi.org/10.1016/j.mporth.2012.06.007>

*DOI:*

[10.1016/j.mporth.2012.06.007](https://doi.org/10.1016/j.mporth.2012.06.007)

*Publication date:*

2012

*Document Version*

Peer reviewed version

[Link to publication](#)

NOTICE: this is the author's version of a work that was accepted for publication in *Orthopaedics and Trauma*. Changes resulting from the publishing process, such as peer review, editing, corrections, structural formatting, and other quality control mechanisms may not be reflected in this document. Changes may have been made to this work since it was submitted for publication. A definitive version was subsequently published in *Orthopaedics and Trauma*, vol 26, issue 4, 2012, DOI 10.1016/j.mporth.2012.06.007

**University of Bath**

**Alternative formats**

If you require this document in an alternative format, please contact:  
[openaccess@bath.ac.uk](mailto:openaccess@bath.ac.uk)

**General rights**

Copyright and moral rights for the publications made accessible in the public portal are retained by the authors and/or other copyright owners and it is a condition of accessing publications that users recognise and abide by the legal requirements associated with these rights.

**Take down policy**

If you believe that this document breaches copyright please contact us providing details, and we will remove access to the work immediately and investigate your claim.

Fig 1

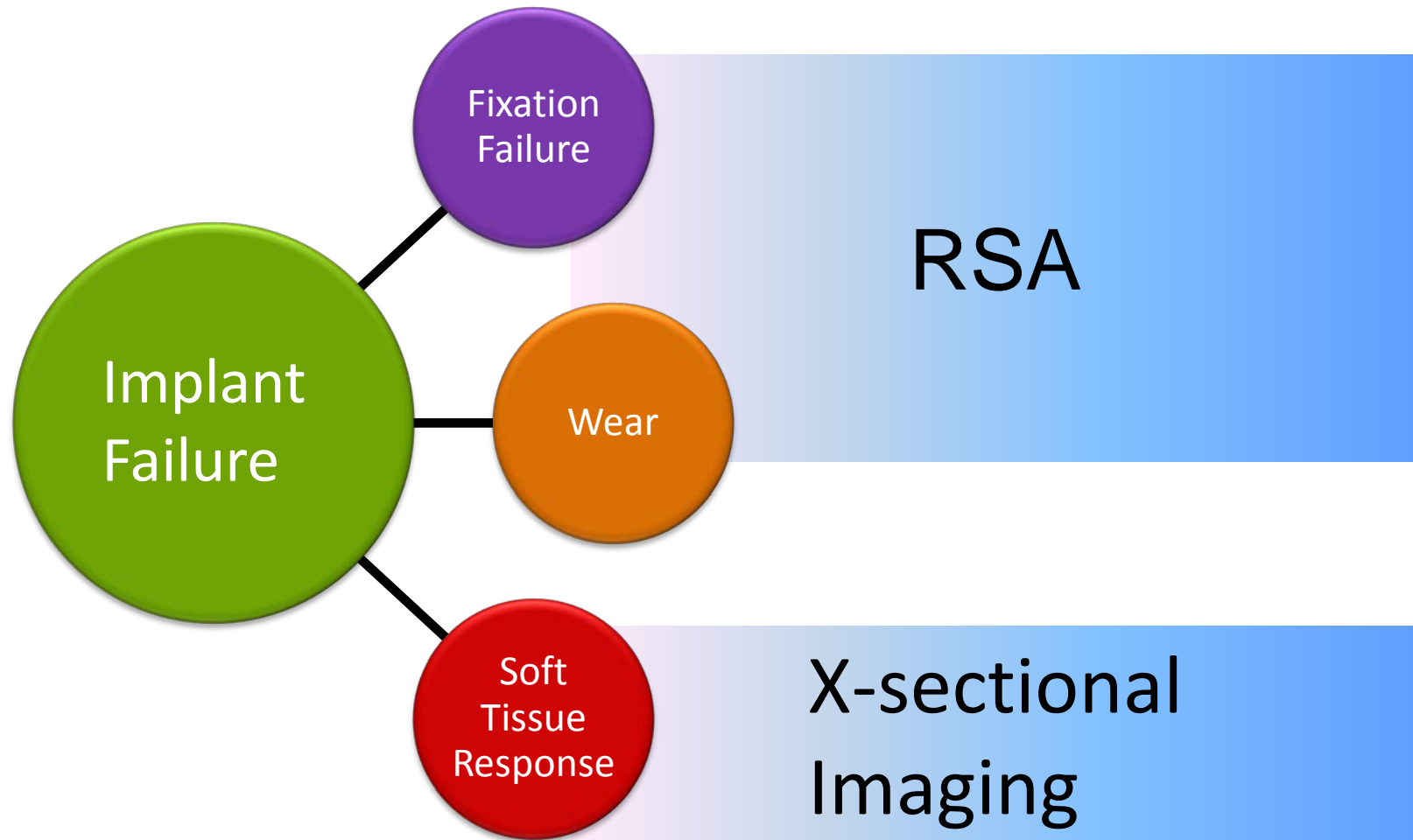


Fig 2

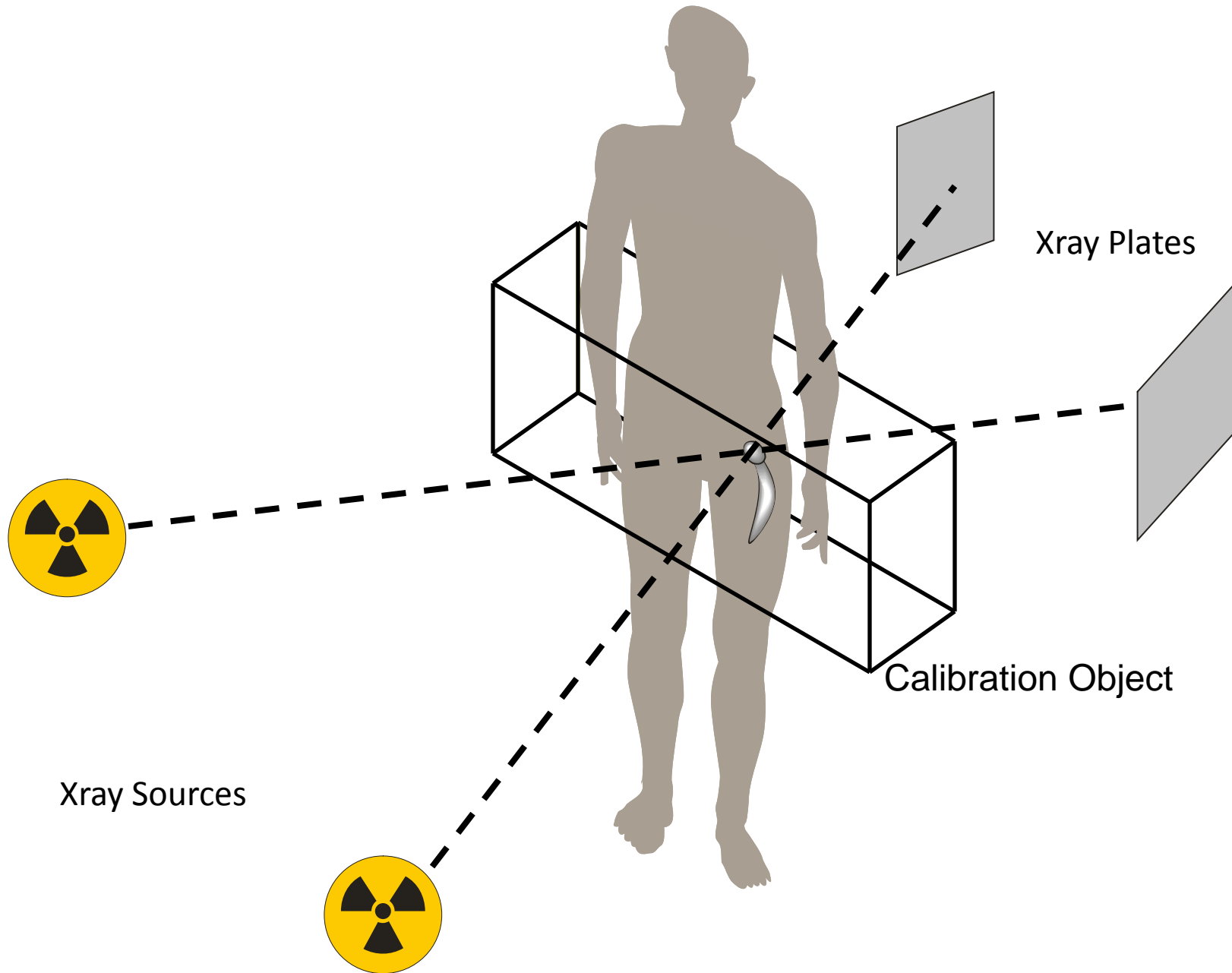


Fig 3

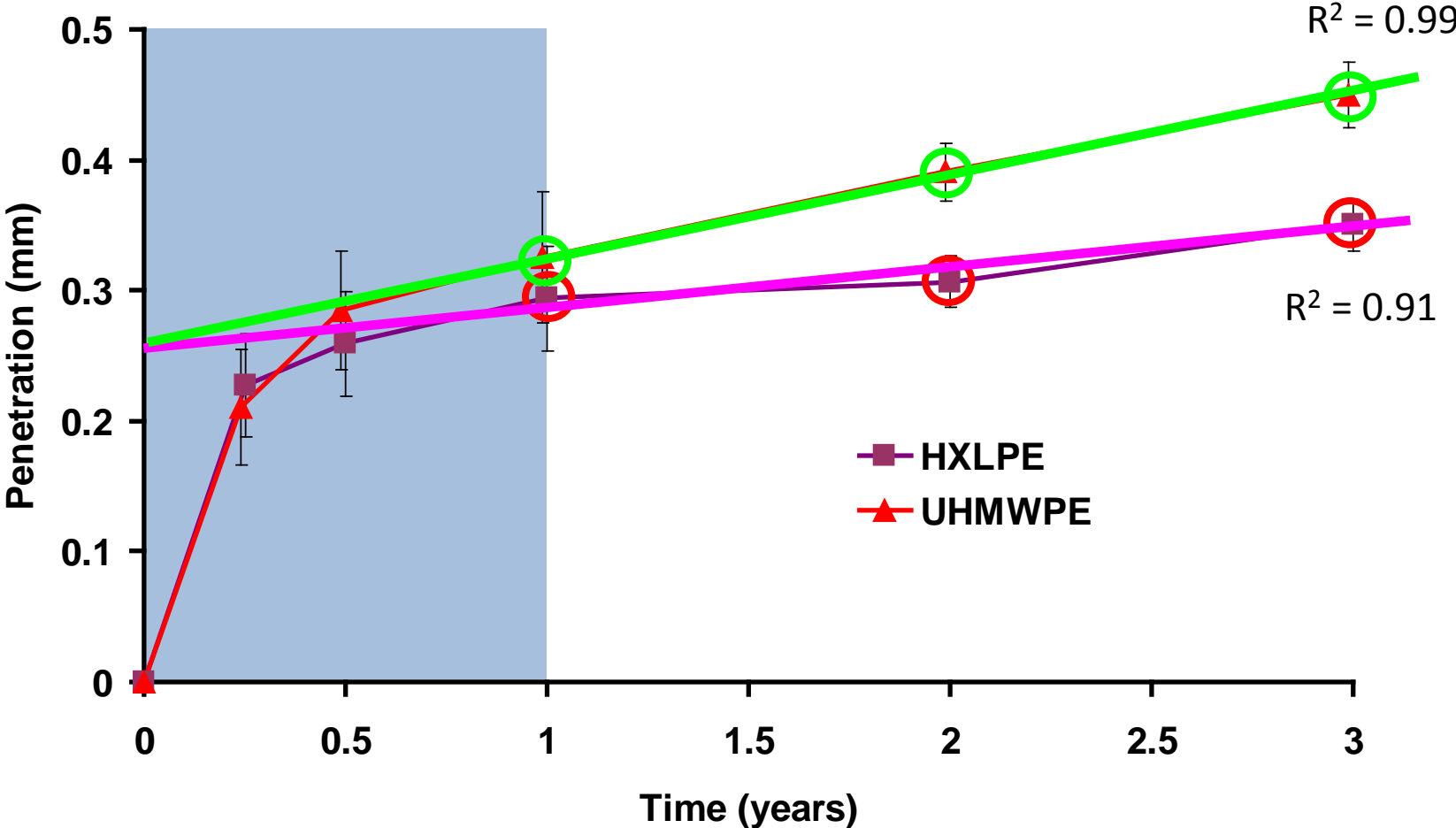


Fig 4



Fig 5

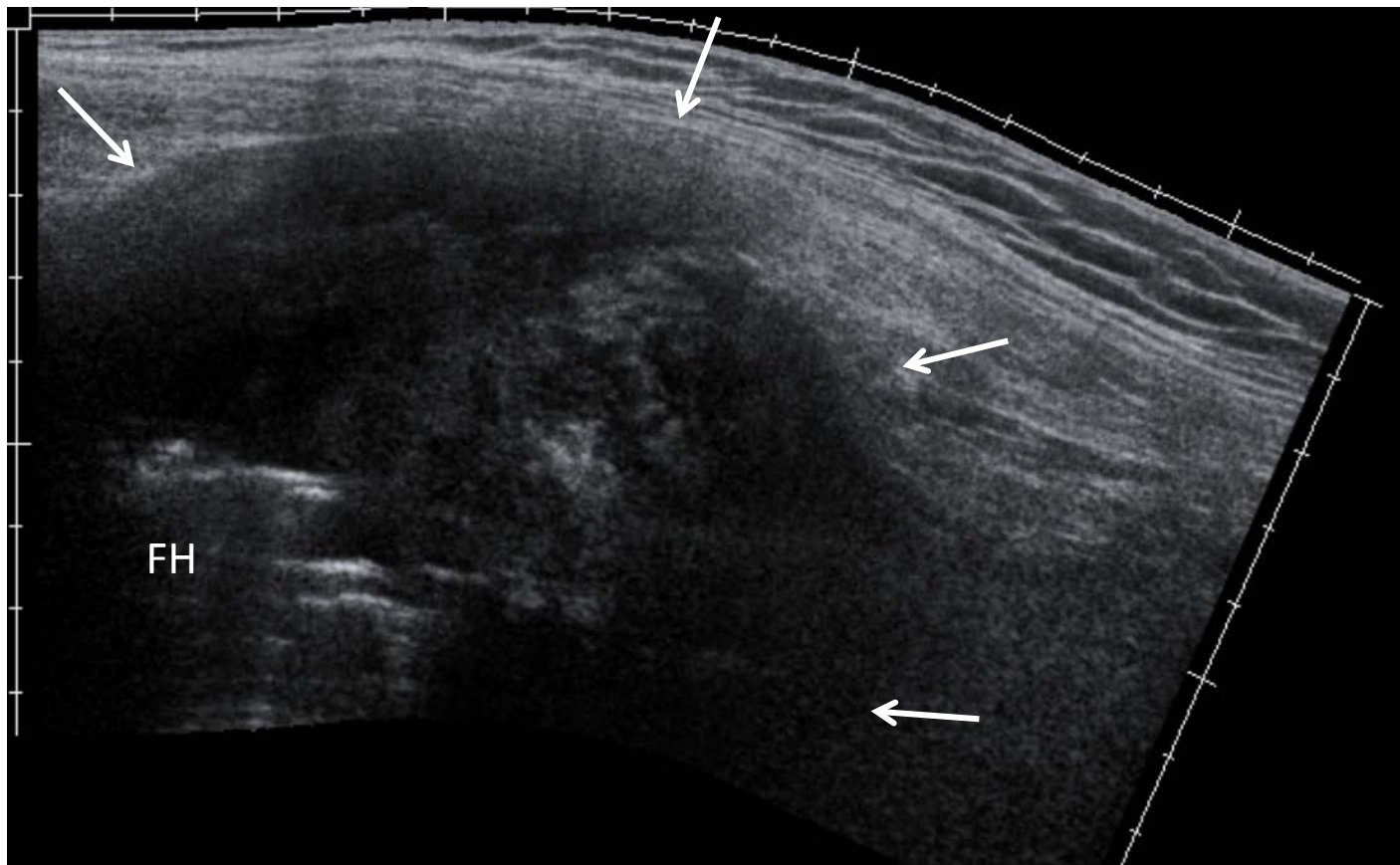


Fig 6

